

# Spring

Issue 24    The Seasonal Magazine  
for Felixstowe Residents    2025



**Your Community Stories | Nominate a Community Hero | Mayor's Charity Events |  
Art & Music | Springtime Family Fun | The 40th Anniversary of Felixstowe in Flower**



# LA VIDA



15th March

## SOUL TONIC

GOOD FOR  
YOUR SOUL

LA VIDA SHOWBAR, ABOVE BEACH STREET FELIXSTOWE, IP11 2DN

[WWW.LAVIDASHOWBAR.CO.UK](http://WWW.LAVIDASHOWBAR.CO.UK)

11TH  
MAY



@LAVIDASHOWBAR



8.00  
PM

EUROVISION  
SONG CONTEST  
MALMÖ 2024

**VIEWING PARTY**

With 2 Special Guest Hosts

BEACH STREET PARTNERSHIP:

ORDER YOUR FOOD WITH VENDORS, EAT YOUR FOOD AT LA VIDA

**RSVP: [LAVIDASHOWBAR.CO.UK](http://LAVIDASHOWBAR.CO.UK)**

18YRS+ EVENT. FULL T&CS VIA WEBSITE

## ULTIMATE MADNEZZ BED AND BREAKFAST TOUR



20th April

## BURLESQUE *By The Beach*

RETURNS 29TH JUNE 2024

BOOK NOW:

**[LAVIDASHOWBAR.CO.UK](http://LAVIDASHOWBAR.CO.UK)**

La Vida Showbar, Felixstowe IP11 2DN

Ticket Terms, Conditions & Fees Apply.

Strictly 18 yrs + Event

**For more events, please head over to our website  
[www.lavidashowbar.co.uk](http://www.lavidashowbar.co.uk)**



**La Vida Showbar Above Beach Street Felixstowe, IP11 2DN**





# Welcome from the Mayor

## Hello and welcome to this Spring 25 edition!

I cannot believe that I am coming to the end of my year as Mayor. The time has flown by. It has been an honour to serve the town as Mayor, and the highlight of my year has been meeting so many fantastic people along the way. I have learnt so much about Felixstowe, and had the pleasure of working alongside my two fantastic charities, Breast Friends CIC and The Landguard Trust. We have hosted a series of very successful Mayor's Charity Events, from a Curry Night, an Italian Evening, a Wine and Cheese Evening at Landguard Fort accompanied by a bargain hunt, a Quiz Night, and a Barn Dance, which was brilliant fun – and there are plenty more to come!

On 20 March, The Suzie Lowe Theatre Company will host A Night at the Musicals with the Mayor at the award-winning La Vida. Tickets are on sale now for just £15pp. The much-loved fashion show, "Catwalk on the Coast" will be hosted at St Johns Church on Thursday 1 April. On 19 April, you can Walk a Mile With the Mayor from Martello P to Landguard Fort. Finally, the Mayor's Ball will be hosted at Sea You on 25 April, where we will conclude a fantastic year with a delicious three-course meal and live music from Rude and Reckless and Asha Louise. You can book your tickets at [www.breastfriends.co.uk/events](http://www.breastfriends.co.uk/events).

On 20 February, Felixstowe Town Council hosted a Charity and Voluntary Organisations Summit at Felixstowe School. This inspiring event brought together a charities and voluntary organisations in Felixstowe and the surrounding area for a day of workshops and networking. The event was very well received and I hope it will encourage charities to work more closely together, as Felixstowe is so fortunate to have so many great organisations covering a diverse range of activities, support and services – part of what



makes it such a lovely place to live. My thanks go to everyone who generously supported the event, and to all those who attended. You can read more about the day on page 15 of the magazine.

In April, I look forward to hosting the Bürgermeisterin of Wesel, Ulrike Westkamp, and Burgermeister of Salzwedel, Olaf Meining, in Felixstowe. Not only do we have an interesting programme of events lined up locally, we have been invited to visit the Houses of Parliament by our MP, Jenny Riddell-Carpenter. Bürgermeisterin Ulrike Westkamp will be stepping down after 20 years in her role later this year, so this will be her last visit to Felixstowe in this capacity. I am sure we all wish her well for the future, as she has been a great advocate for the town twinning relationship between Felixstowe and Wesel.



Finally, to conclude my last Mayoral column in the Town Council's magazine, I started the year with the theme of service. Throughout my year, I have seen the selfless service of so many people in the Town through the charities and organisations I have visited, the faith groups, the community of schools and care homes, and I feel so lucky to live where I do, and to represent such a wonderful place. I will be recognising some of those who serve others in Felixstowe at the Annual Town meeting on 14 May 2025, which will also include a summary of my Mayoral year. I hope to see many of you there.

*D Rowe*

Cllr David Rowe, Mayor of Felixstowe

## Your Magazine

We would be pleased to receive relevant articles from community groups and voluntary organisations letting residents know what is happening in the Felixstowe area.

If you would like to submit an article for consideration in the next quarterly edition Summer 2025 (covering the period from **June - 1 September**), please email [holly.miles@felixstowe.gov.uk](mailto:holly.miles@felixstowe.gov.uk) by **15 May**.

If possible, include hi-res images/photos and your group's logo. You don't have to send a fully-written article – bullet points or a few notes are fine to help point us in the right direction – but it must be no longer than 250 words. We will aim to cover many different articles from issue to issue and will seek to offer a fair and equal representation for community groups throughout the town. Sometimes articles may have to be edited, shortened or dropped altogether. Felixstowe Town Council reserves the right to publish articles at its discretion.

## Advertising

Limited advertising space will be available in future editions to support the cost of publication, with priority given to local, reputable businesses.

**Call 01394 282086 or email [enquiries@felixstowe.gov.uk](mailto:enquiries@felixstowe.gov.uk) for prices and to book your ad.**

Photo credit: With thanks to Stephen Squirrel for providing the cover image and header images.

A poster for the Mayor of Felixstowe's Two Tone Ball. The poster features a black and white checkered border. At the top, there are logos for Breast Friends and Landguard. The text reads: "THE MAYOR OF FELIXSTOWE'S TWO TONE BALL", "SEA YOU", "ORFORD RD, FELIXSTOWE, IP11 2DY", "25 APRIL 2025", "7PM-12PM", "TICKETS £55PP", "THREE COURSE MEAL", "LIVE MUSIC FROM RUDE AND RECKLESS", "DRINK ON ARRIVAL", "RAFFLE AND AUCTION". There is a QR code and a small image of a couple dancing. At the bottom, it says "OR CALL 01394 282086".

## Getting in Touch

Drop into the Town Hall or call us during office hours (9am – 4pm Mon-Fri) or email us at any time. We'd love to hear from you.

Phone: **01394 282086**

Email: [enquiries@felixstowe.gov.uk](mailto:enquiries@felixstowe.gov.uk)

Address:

**Felixstowe Town Hall  
Undercliff Road West  
Felixstowe  
IP11 2AG**

[www.felixstowe.gov.uk](http://www.felixstowe.gov.uk)



**Felixstowe is a  
Fairtrade  
Town**

# An Update from the Mayor's Charities

The Mayor's chosen charities for the year 2024-25 are The Landguard Trust and Breast Friends CIC. You can read more about the charities, the important work they undertake in Felixstowe and the surrounding area, and an exciting year of upcoming charity events below.

## BREAST FRIENDS: Support & Friendship in Felixstowe



What started as a small gathering has flourished into a thriving support network right here in Felixstowe. Each month, our Felixstowe members meet at different venues around town - whether for coffee, lunch, a stroll or just a friendly chat. These relaxed meet-ups offer a space to share, connect, and find support among those who truly understand how it feels to be affected by breast cancer.

Our Felixstowe Ambassador, Liz Day, shares, "It's amazing to see how this group has grown. It's not just about support - since joining I've had renewed purpose and have made many good friends. Using my skills to support others is so rewarding and seeing ladies full of confidence and smiling again is just wonderful."

One of our members adds, **"I was nervous about coming along at first, but now I can't imagine life without this group. The support and friendships I've found here have made such a difference."**

If you or someone you know has been affected by breast cancer, you're not alone. Our meet-ups are a chance to connect, find friendship and support. To find out more, drop us a message at [hello@breastfriends.co.uk](mailto:hello@breastfriends.co.uk)—we'd love to welcome you.

## Landguard Trust



What an incredible year this has been! When we were chosen as one of the two charities for this Mayoral year we were unaware of what an exhilarating and heart-warming twelve months it would be. From bargain hunts to boogie bingo, from quizzes to curry nights and from invigorating line dancing to a romantic Italian evening, all of our events have been fun-filled and have been generously supported by the people of Felixstowe.

And, there is more to come! We are looking forward to the "Night at the Musicals" at La Vida, the spectacular Fashion Show, walking a Mile with the Mayor at Easter and the grand finale, the Mayors Ball!

We are very grateful to Cllr David Rowe, the Mayor of Felixstowe, for his support and encouragement and for enthusiastically joining in with the fun, and we are indebted to Ash, Sue and Holly at the Town Hall for all their hard work behind the scenes.

Lastly we are delighted to have made some new friends, our Breast Friends, Caroline and Janine. For them to have turned a dark chapter in their own lives into a vibrant, inspiring, compassionate organisation that helps their fellow survivors of Breast Cancer has taken courage, determination and a great sense of humour! They are an inspiration to us all.

David Gledhill, Chair of The Landguard Trust

Breast Friends & Landguard Trust Present

# A NIGHT AT THE MUSICALS

*With The Mayor Of Felixstowe*

**THURSDAY 20TH MARCH**  
DOORS 7PM SHOWTIME 8PM

A night of iconic musical hits with all the glitz and glamour of The Suzie Lowe Theatre Company.

**BOOK NOW:**  
[WWW.BREASTFRIENDS.CO.UK](http://WWW.BREASTFRIENDS.CO.UK)

**La Vida Showbar, Felixstowe IP11 2DN**

Family friendly event. Service fees/T&Cs via website. Charitable event. La Vida Showbar acting as venue host only and is not accessible.



**SCAN TO BOOK**



## WALK A MILE WITH THE MAYOR

Walk from Martello P and across the breathtaking Landguard Nature Reserve to Landguard Fort

Sponsored walk in support of Breast Friends CIC and The Landguard Trust

(The Fort, Felixstowe Museum, and Martello P will all be open to the public on this day - entrance fees apply)

**19 APRIL 2025 - 11:30am**  
Martello Tower P to Landguard Fort





# Who Do I Talk To About...?



**Felixstowe Town Council is the council closest to its residents and is responsible for:**

- The office of the Town Mayor, Deputy Mayor and Mayoral arrangements.
- Awarding grants to support local community groups and charities.
- Remembrance events in conjunction with the Felixstowe branch of the Royal British Legion
- The upkeep of Felixstowe's War and Flood Memorials.
- Felixstowe's Community Emergency Plan
- Felixstowe in Flower floral basket scheme and competitions.
- Allenby Park and Gosford Way Park.
- Floral bedding at The Triangle.
- Felixstowe's Civic Awards scheme.
- Supporting the town's Twinning and Partnership arrangements with the Germans towns of Wesel and Salzwedel.
- Felixstowe Youth Forum.
- Funding the Christmas Lights (supported by the Lions Club of Felixstowe).
- Representation on local planning applications, strategic planning and consultations.
- Supporting the provision of Community Public Access Defibrillators.
- Felixstowe Town Hall - the administrative home of the Town Council, a local base for partner community services such as Suffolk County Council Registrar, open to the public for meetings and popular wedding venue.
- Broadway House - the home of Felixstowe Old People's Welfare Association (FOPWA).
- Walton Community Hall - available for private and community hire.
- Allotment sites at Cowpasture, Ferry Road, Railway Hill and Taunton Road.
- Annual funding and contribution to key local service providers including Felixstowe Coast Patrol & Rescue, LevelTwo Youth Project, Citizen's Advice and the Landguard Fort Trust.
- Felixstowe Cemetery and its Gardens of Rest.

**Call 01394 282086 or visit  
[www.felixstowe.gov.uk](http://www.felixstowe.gov.uk)**



**East Suffolk Council provides a range of regulatory and community services across the whole of the East Suffolk district and is responsible for:**

- The collection of council tax and business rates
- Local planning and building regulations
- Kerbside waste and recycling collections, including fly tipping (in conjunction with East Suffolk Services Ltd.)
- Benefits
- Community Safety
- Elections
- Housing needs
- Maintaining the resort of Felixstowe and the provision of the beach huts
- Maintenance of Felixstowe's public parks, open spaces and place areas (in conjunction with East Suffolk Services)
- Public car parks and parking enforcement
- Licensing, Environmental and Port Health
- Leisure Services (in conjunction with Places Leisure)
- Street cleaning

**Call 0333 016 2000 or visit  
[www.eastsuffolk.gov.uk](http://www.eastsuffolk.gov.uk)**



**Suffolk County Council is the top tier of local government, providing services on a county-wide basis and is responsible for:**

- Highways (except motorways and Major A roads, which are the responsibility of Highways England)
- Education and Libraries
- Social Services
- Trading Standards
- Public transport
- Fire and Rescue Services
- Waste and recycling centres
- Bus passes and disabled parking permits
- Registry of births, deaths and marriages
- Most street lighting, pavements, rights of way, footpaths and cycle ways
- Adoption and fostering

**Call 0345 606 6067 or visit  
[www.suffolk.gov.uk](http://www.suffolk.gov.uk)**



# Town Councillors 2024/25

Mayor of Felixstowe: Cllr David Rowe

Deputy Mayor of Felixstowe: Cllr Corrine Franklin

## Walton Ward



**Amanda Folley \***  
amanda.folley@felixstowe.gov.uk  
01394 282086



**Mike Deacon \***  
mike.deacon@felixstowe.gov.uk  
01394 211146



**Margaret Morris**  
margaret.morris@felixstowe.gov.uk  
01394 274345

## Central Ward



**Darren Aitchison**  
darren.aitchison@felixstowe.gov.uk  
07838 215 964



**Seamus Bennett \* \*\***  
seamus.bennett@felixstowe.gov.uk  
07818 664 751



**Jan Candy \***  
jan.candy@felixstowe.gov.uk  
0778 527 7647

## East Ward



**Nick Barber**  
nick.barber@felixstowe.gov.uk  
07876 757268



**Bernard Price**  
bernard.price@felixstowe.gov.uk  
01394 279794



**Steve Wiles \*\***  
steve.wiles@felixstowe.gov.uk  
07986 566 225

## South Ward



**Sharon Harkin**  
sharon.harkin@felixstowe.gov.uk  
01394 282086



**Wendy Underwood**  
07790 618 008  
wendy.underwood@felixstowe.gov.uk

## Port Ward



**Stuart Bird \*\***  
stuart.bird@felixstowe.gov.uk  
01394 275128



**Marc James**  
marc.james@felixstowe.gov.uk  
07973 870 066



**David Rowe**  
david.rowe@felixstowe.gov.uk  
07851 803 503



**Michael Sharman**  
michael.sharman@felixstowe.gov.uk  
01394 213071



**Corrine Franklin**  
corrine.franklin@felixstowe.gov.uk  
07960 722 333

### Key

\* Councillor is also a Member of East Suffolk Council

\*\* Councillor is also a Member of Suffolk County Council



LOCAL COUNCIL  
AWARD SCHEME  
QUALITY GOLD

# Felixstowe Town Council

The Council comprises 16 Members representing five wards who are elected every four years. Council also delegates some of its functions to its Committees. Please note forthcoming meeting dates below:

5th March	Ordinary Council	7:30am
5th March	Planning & Environment	9:30pm
19th March	Finance & Governance	7:30am
19th March	Planning & Environment	9:30pm
2nd April	Planning & Environment	9:30pm
9th April	Civic & Community	7:30am
16th April	Planning & Environment	9:30am
23rd April	Assets & Services	7:30pm
30th April	Planning & Environment	9:30am
13th May	Annual Town Meeting	7:00pm
14th May	Planning & Environment	9:30am
21st May	Annual Council Meeting	7:00pm
28th May	Planning & Environment	9:30am

Note: all meetings listed are open to the press and public, who are also welcome to attend online via Zoom. 15 minutes are set aside for public participation, during which time members of the public can speak or ask a question. Details on when meetings take place, the matters for consideration and records of decisions made are all available on our website, facebook page and twitter.

For further information please telephone 01394 282086 or email [enquiries@felixstowe.gov.uk](mailto:enquiries@felixstowe.gov.uk).

## Contacting Council Staff

**Phone:** 01394 282086 (all staff)

**Email:** [enquiries@felixstowe.gov.uk](mailto:enquiries@felixstowe.gov.uk)

### Address:

Felixstowe Town Hall, Undercliff Road West, Felixstowe, IP11 2AG

**Website:** [www.felixstowe.gov.uk](http://www.felixstowe.gov.uk)

**Ash Tadjrishi** – Town Clerk and Responsible Financial Officer  
[townclerk@felixstowe.gov.uk](mailto:townclerk@felixstowe.gov.uk)

**Debbie Frost** – Deputy Town Clerk  
[debbie.frost@felixstowe.gov.uk](mailto:debbie.frost@felixstowe.gov.uk)

**Sue Faversham** – Civic Events Officer  
[sue.faversham@felixstowe.gov.uk](mailto:sue.faversham@felixstowe.gov.uk)

**Sarah Morrison** – Planning Administration Assistant  
[sarah.morrison@felixstowe.gov.uk](mailto:sarah.morrison@felixstowe.gov.uk)

**Shaun Congi** – Financial Administration Assistant  
[shaun.congi@felixstowe.gov.uk](mailto:shaun.congi@felixstowe.gov.uk)

**Holly Miles** – Communications Officer  
[holly.miles@felixstowe.gov.uk](mailto:holly.miles@felixstowe.gov.uk)

**Janine Smith** – Assets & Services Officer  
[janine.smith@felixstowe.gov.uk](mailto:janine.smith@felixstowe.gov.uk)





# Your Community Stories

## Felixstowe Fairtrade Forum



Fairtrade Ted, along with many Felixstowe residents, is a big fan of Felixstowe AND Fairtrade chocolate – so we think we have found a way of bringing them together. Our colleagues in Beccles last year launched a bespoke Fairtrade chocolate bar with a wrapper advertising the town, including a lovely photo of boats on the broad with an attractive townscape behind. The bars, which retail at £3 each, have been a great success with over 550 sold to date. They have been bought by tourists and residents alike and have been welcomed by local retailers, who make a modest profit on each sale.

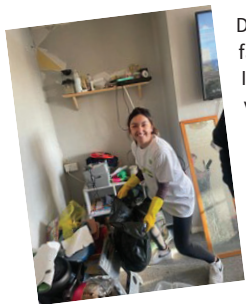
The Forum are keen to promote a similar bar for Felixstowe. We feel that there would be a good demand for the product in the town and visitors would welcome a high quality and modestly priced souvenir to remind them of their visit. They would also have the satisfaction of buying a product produced to fair standards and by sustainable means. We feel that local retailers would be pleased to stock the bars, which would provide a useful source of income.



We have talked to prospective partners in this project, including representatives of the Town Council and 'Love Felixstowe', and have had a positive reaction. We hope that it may be possible to work with these partners for a possible launch of the bar for the 2025 summer season. If you have any ideas or comments on the proposal please feel free to share them with us at [secretary@felixstowe-fairtrade.org.uk](mailto:secretary@felixstowe-fairtrade.org.uk).

## Dora Brown

## Dora Brown



Dora Brown is a local charity working to support families with children in and around Felixstowe, Ipswich and Woodbridge. Dora has a large team of volunteers who transform homes, free-of-charge, for families living in crisis; homes which have broken down because of furniture & hygiene poverty and domestic neglect.

We clear clutter and rubbish, deep clean and organise. With donations and our corporate partners we provide furniture, curtains, bedding, hygiene products and whatever necessities are

needed. The physical transformation of the home has a knock on impact on the health and wellbeing of families we support. We have helped ten families in Felixstowe, that's 26 children and 16 adults living in cosier, cleaner, safer homes in your community.

Dora Brown works with families suffering severe hardship for any reason. We work with families of any size, in any type of home. We treat every family and home with respect, sensitivity and confidentiality. We never judge. No matter how bad people feel their home or situation is, we're here to help. We roll up our sleeves and get stuck in.



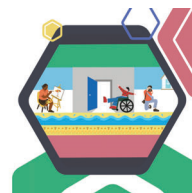
Want to help? We always welcome new volunteers. We have an Amazon Wishlist of things our families desperately need that you can buy and have sent directly to us. We rely on your donations, grants and our own fundraising, so we are always looking for new opportunities to fundraise. Please visit our website [www.dorabrown.com](http://www.dorabrown.com) or Instagram @dorabrowncharity for more information on how you can support us.

## Felixstowe Disability Pride 2025: Celebrating Individuals, Not Limitations

On Friday, **11th July 2025**, Felixstowe will host its first **Disability Pride event**, a vibrant, inclusive event celebrating individuals, not limitations. Organised by **Suffolk Mobility Events**, a not-for-profit partnership between Ian Bell (Suffolk Mobility Solutions) and **Clare Lucas** (Ducks In A Row), this event aims to **challenge stereotypes, promote accessibility, and bring the community together**.

**Felixstowe Disability Pride**

11th July 2025

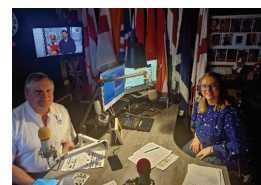


Ian, inspired by his wife Glynis's stroke in 2012, is passionate about helping people live independently. In 2024, Last year Glynis walked for the first time in 12 years, along Felixstowe prom, reinforcing the importance of accessibility. Clare, an experienced project and event manager, brings her expertise to ensure the event is impactful and inclusive.



The day will feature a **colourful procession along Felixstowe Prom**, a **Disability Roadshow and Trade Fair** at the Leisure Centre, **live entertainment**, and opportunities for businesses and individuals to connect.

When Ian attended **Chester Disability Pride** last year, he saw the **empowerment, and community spirit**—and knew he had to bring something just as special to Felixstowe.



The event is seeking **sponsors and supporters** to help make the day a success. **Platinum, Silver, and Bronze sponsorships** are available, alongside opportunities to sponsor **key elements of the event**. Any proceeds after costs will be donated to **Suffolk Mind and ActivLives**.

Join us in making history. Whether attending, exhibiting, or sponsoring, **your support matters**.

**Register your attendance here:** <https://www.eventbrite.com/e/felixstowe-disability-pride-11th-july-2025-registration-1148309236839>

**Interested in sponsoring?** Contact: [felixstowedisabilitypride@gmail.com](mailto:felixstowedisabilitypride@gmail.com)

**More information:** [www.felixstowedisabilitypride.co.uk](http://www.felixstowedisabilitypride.co.uk)

**FELIXSTOWE GLASS CO. LTD.**  
EST 1984

**Specialist in All Types Of Glass, Domestic or Commercial**

- Supplied or Fitted
- Domestic or Commercial
- Glass Cut to All Shapes Sizes & Types
- Replacement Double Glazing Glass
- Sash Window & Velux window Glass
- Laminated & Safety Toughened Glass
- Mirror & Glass Shelving
- Staircase Glass & Architectural Glass

Call us now to discuss your glazing requirements:

**Call: 01394 270958**

**Open Monday to Friday  
8.30am - 5pm**

**Langer Park Industrial Estate, Holland Rd, Felixstowe IP11 2DB**



## St Elizabeth Hospice – Hop To It Trail



St Elizabeth Hospice has announced its latest fundraising art trail – Hop to it! Suffolk 2025 – will take place between 21st June and 29th August this summer.

Following the success of previous hospice art trails – Pigs Gone Wild, Elmer's Big Parade Suffolk, and The Big Hoot Ipswich 2022 – this much-anticipated event will once again be hosted in Ipswich.

For the first time, it will also extend to satellite locations – Beccles, Felixstowe, Lowestoft, and

Woodbridge – with support from presenting partners East Suffolk Council, Ipswich Borough Council and Suffolk County Council.

Created in partnership with Wild in Art, the project will see 33 large, ornately decorated hare sculptures take over Ipswich for the summer, each featuring unique designs. Meanwhile, the four satellite locations will collectively host 52 sculptures, with a mix of large and small hares.

Celia Joseph, Community & Partnerships Fundraising Manager at St Elizabeth Hospice, said: "We are delighted to announce the dates for our next art trail – Hop to it! Suffolk 2025. Our talented artists are already hard at work creating brilliant designs, and we're grateful to the many supporters and local businesses helping us prepare for the launch.

"We cannot wait to see the trail hit the streets of Suffolk, bringing colour and creativity to Ipswich, Beccles, Felixstowe, Lowestoft, and Woodbridge this summer. We look forward to welcoming you on the trail for this family friendly activity in support of the work of St Elizabeth Hospice.



"If you're interested in supporting the trail, we'd love to hear from you! We're looking for volunteers to help make Hop to it! Suffolk 2025 our biggest art trail yet. Please visit our website to find out more."

Further details about the launch will be released in the coming months, along with the date for the all-important auction, where the sculptures will be auctioned off to raise vital funds for St Elizabeth Hospice.

All funds raised by Hop to it! Suffolk 2025 will go towards supporting the work of St Elizabeth Hospice. An independent Suffolk charity which every year delivers support to over 4,000 people throughout East & Mid-Suffolk, Great Yarmouth and Waveney living with a progressive or life-limiting illness.

Annually, these services cost around £12 million to facilitate, with 70% of funds needed being raised through local community support.

Find out more details about Hop to It! Suffolk 2025 and how you can support the trail by visiting [www.stelizabethhospice.org.uk/hoptoisuffolk/](http://www.stelizabethhospice.org.uk/hoptoisuffolk/).

For details on how to volunteer as part of Hop to it! Suffolk 2025 – [www.stelizabethhospice.org.uk/get-involved/volunteer/hop-to-it-volunteers](http://www.stelizabethhospice.org.uk/get-involved/volunteer/hop-to-it-volunteers)

## Felixstowe Carnival 25th to 27th July 2025



As you can see, we have a lovely new seaside logo and our theme for this year's Carnival is The Wonderful World of Books. We know this theme will provide a wide choice of subjects for the procession floats. It could be a children's story, a murder, a cookery book, fantasy – whatever you fancy. If you wish to join the procession on Saturday 26th July just go to our website and download the entry forms. It's always a great day. Don't forget, we can usually supply a truck for your float free of charge, so just request this when booking.

Amazingly, there has been a Felixstowe Carnival for over 100 years and, as usual, we will be searching for our own Royal Family. This year a local beauty salon has very generously offered to take on the expense and organisation of the Royalty float. We are very grateful to Barbara Sue Aesthetics for their wonderful support.

Of course, we have been busy booking the fabulous music acts for the weekend and entertainment for the family area. We will also have the funfair, plus a craft fair in the leisure centre with traders and food stalls on the promenade and event area. Weather permitting, we will have a wonderful firework display on the Sunday night. There will be something for everyone.

Thanks to Felixstowe Town Council for its annual grant towards the Carnival. We will have plenty of options for sponsorship of various events/music acts and for advertising in our programme. Full details are on our website. Please help us raise the necessary funds so that we can continue to provide you with this unique event.

As always, we will need extra volunteers to help over the weekend so if you can spare a few hours, please email us. We look forward to seeing you all in July.

**website:** [felixstowecarnival.org](http://felixstowecarnival.org) **Email:** [contact@felixstowecarnival.org](mailto:contact@felixstowecarnival.org)

## "Thanks to all!" says Santa – Felixstowe Lion's Club and Save The Children



**Save the  
Children**



Felixstowe Town Council gave double assistance to the highly successful Santa's Ride Around Town in December, supporting the online tracker and publishing the schedule in the Winter edition of their magazine.

Many families were delighted to be able to use the Santa Tracker to follow the sleigh's progress, and be ready for its arrival in their street, meaning Felixstowe and the villages around gave a fabulous welcome to Santa and his faithful reindeer Rudolph, as they toured the community bringing lights, music and joy to all.

The generosity of our citizens led to a magnificent sum in excess of £13,000 being donated to the vital work of the three organising charities: Felixstowe Lions and Rotary clubs, and Save the Children Fund.

We would like to thank everyone for their excellent support, including our wonderful volunteer team leaders, collectors, drivers and Santas, 3PL for the sleigh's December accommodation, Felixstowe Pier Amusements, who supported the money counts, the staff at Savers, Morrisons, The Spar, and the Town Council. We are always keen to recruit more supporters, so if you can help in any way, big or small, please contact us at [p.j.griffiths@btinternet.com](mailto:p.j.griffiths@btinternet.com).

Meanwhile, Santa looks forward to seeing you all again later this year!



## Felixstowe Coastwatch has busy start to 2025



Winter time at Felixstowe Coastwatch is naturally a quieter period for watchkeeping, given that there are fewer people and vessels on the water than in the warmer months. It is a good time though for training new recruits as they are able to build their skills before the peak periods of activity come along. However, incidents still occur in winter and the beginning of 2025 has proved to be particularly busy.

Watchkeepers assisted in searches for missing persons in the areas of the beaches and promenades of Felixstowe, and helped in the case of a person for whom there were concerns about their wellbeing. In addition, there were two occasions where unusual objects were spotted in the water and needed investigation, one of which resulted in recovery of the item by the Harwich inshore lifeboat. There was also an incident where concerns had been raised for a paddleboarder off the entrance to the River Deben (the paddleboarder returned to shore safely and spoke with the rescue team).

All of these incidents involved close liaison between Felixstowe Coastwatch and the HM Coastguard control centre in Dover, plus the local Coastguard Rescue Team (CRT), RNLI lifeboats and on occasions the police (Suffolk Constabulary). On several occasions, the Coastwatch lookout on Martello Tower P was used as a coordination base by the CRT. This shows the importance of team work in saving lives at sea, and the respect with which Felixstowe Coastwatch is held by the search and rescue fraternity.

## Beside the Seaside Exhibition at Felixstowe Museum

Felixstowe Museum is excited to announce *Beside the Seaside*, which is the first exhibition at the Museum to chart Felixstowe's story as one of the most fashionable resorts of the late 19th and early 20th centuries, right up to the present. Opening on 4th April and running for two seasons, the exhibition will excite those with long memories of the resort, and those who continue to enjoy its charms today. Featuring loans from accredited museums and seafront businesses, the display will also contain interactive elements to make it engaging for visitors of all ages.



An exciting and nostalgic collection of amusements from the famous Mannings arcade forms one centrepiece to the exhibition, with gallopers, working penny machines, and a risqué 'What the Butler Saw'! In contrast, Visitors books from grand seafront hotels, including one on loan from a private collection, contain doodles, sketches and signatures, including that of Winston Churchill! These objects and many more illustrate fascinating stories, such as Churchill's impromptu stop in Felixstowe, the trial of Wallis Simpson, and the eccentric Felixstowe visionary Colonel Tomline.



Alongside *Beside the Seaside* and a range of other temporary displays, the Museum's dozen rooms of permanent collections include archaeology, RAF Felixstowe, all aspects of local history, and much more. Children's trails, our Beehive Café, and friendly volunteers make it a great day out, and Landguard Fort is just next door! Felixstowe Museum will be open Thursday-Sunday, 11.00-17.00, from 4th April.



*Beside the Seaside*  
Felixstowe Museum

## An Update from the Felixstowe Town Council Grounds Team



### Wildlife Area at Cowpasture Allotments

Alongside their daily duties, maintaining the Allotment and Felixstowe Cemetery

sites, alongside Allenby and Gosford Way Park in readiness for the Spring, the Felixstowe Town Council Grounds Team have also been busy establishing a wildlife area at the Cowpasture Allotment Site. The wildlife area has been designed with the Cowpasture Allotment tenants in mind, and chippings have been laid to allow tenants access to fruit trees and to observe the wildlife which resides on the site. The Wildlife Area will help to ensure that all users of the Cowpasture Allotment Site, animal and human, feel at home.

### Refurbishment of Allenby Park Gates

Following years of wear, the gates at the entrance to Allenby Park have reached the end of their lifespan.

An thorough assessment by the Felixstowe Town Council Grounds Team concluded that it would be possible for the original wrought iron gates to be restored, preserving their rich history alongside their functionality. The work will be conducted from 3 March, when the gates will be removed from the entrance to Allenby Park. The gates will be

sand blasted, reclaimed wrought iron will be used to replace broken and rusted sections, and they will thereafter be painted and put back into place. The work will be conducted by Kingdom Forge, and is expected to take approximately two months.



### Tree Rescue

A number of mature trees, which were planted dangerously close to a power line at new housing development and were rescued by the Felixstowe Town Council Grounds Team have found a new home at Langley Avenue, where they have been replanted in time for the spring. The trees will continue to be cared for by the Felixstowe Town Council Grounds Team for the duration of their lifespan.



## Bawdsey Radar Museum



Set in the original transmitter block, telling the story of the world's first operational radar station. An award winning interactive exhibition explaining the importance of the work that took place at Bawdsey before, during and immediately after the Second World War. More information can be found on our website: [www.bawdseyradar.org.uk/visit](http://www.bawdseyradar.org.uk/visit)

Open dates in 2025, 3rd April - 2nd November (11am - 4pm, last admission 3pm) Thursdays, Sundays & Bank Holiday Mondays. Children go FREE!

Special events coming up:

**April 6th - 21st** - Children's Easter Trail

**Easter weekend: April 20th & 21st** - Pop Up Cafe 'The Block'

**May 4th, 5th & 8th** - VE Day 80th Anniversary Pop Up Cafe with a forties theme, VE Day children's trail

Volunteer? Can you offer a few hours per month?

We are always on the lookout for volunteers. Activities include meeting & greeting visitors, helping in our onsite shop, helping behind the scenes with the Connections Project, or perhaps maintenance around the museum and its grounds. Do something worthwhile by helping to preserve the nation's heritage as well as making new friends.





# Our Environment

## Litter-Free Felixstowe



**David Attenborough said 'I am hopeful for the future because although nature is in crisis now is the time for action and together we can save it'.**

Too often we can feel sad and depressed as we see our green spaces disappearing or under threat: trees being cut down and the

countryside being concreted over. Litter Free Felixstowe is a group of like-minded residents who want to ensure we protect our precious open land and create new areas where nature can thrive. We are committed to working with key stakeholders to encourage good decisions which will stand up for wildlife and improve our own mental health by providing green outdoor areas for recreation.

Working with the wonderful Lions Club of Felixstowe, we are encouraging schools to enhance their grounds with gardens for pupils and wildlife to enjoy. Children can learn so much from being outdoors: planting vegetables and watching them grow, putting up bird boxes & bug hotels and encouraging butterflies and bees. We will continue to try to inspire children, in particular, with environmentally themed assemblies to encourage positive action. We are always looking for volunteers to help.

We also want to celebrate the individuals, companies, schools and groups who are protecting nature in our town. The 4th Felixstowe Environment Awards will now be held during the summer months to allow more time for the current projects around the town to complete. Felixstowe has so many inspiring people wanting to see a beautiful, clean, natural environment and if you would like to nominate someone you know, please email [litterfreefelixstowe@gmail.com](mailto:litterfreefelixstowe@gmail.com) detailing why they should win an award. The closing date for nominations is now 31 March.

## Free seeds for Edible Felixstowe Sow n' Grow 2025



A new season for 2025 is beckoning for all of us at Edible Felixstowe and we hope to build on our successes in our first year! Please get involved with our brand new scheme if you enjoy growing, or want to start but are not sure how.

In order to make Edible Felixstowe bigger and brighter this growing season. We have free resources to get you started, but we need greenhouses or window sills around the town in which to grow! We want to collaboratively grow plants for the benefit of the entire community.

We are able to provide the seeds, plus seed trays and compost if you need them. All you need is a bright window sill or ledge to start growing for us! If you've always wanted to try growing veggies this is your chance! We will be happy for you to keep some of the plants you grow (if you want them) but also give some back to us for our public beds. We will be running seed sessions at Felixstowe Library on Thursday April 10th from 2-4 and Sunday April 13th from 11-1. Come along and grow with us!

In addition We will be setting up a seed library at Felixstowe Library which will be set up inside the library from mid-March. We have lots of seeds that were donated to us and will be free to take for those who would like to take part. Also if you have unwanted seeds that you would like to donate that would also be fabulous!

We would also love to hear from any organisation or business that would like to get involved with what we are doing this year. See our new website: [www.ediblefelixstowe.org](http://www.ediblefelixstowe.org) for more info.

## 50% off eco-friendly insulation for Suffolk residents

Anyone in Suffolk can receive a 50% discount off their purchase of 200mm or 370mm wide insulation rolls (up to £200) with free delivery, from High Loft, the UK's leading eco loft insulation brand.

Go to [www.bit.ly/suffolkloft](http://www.bit.ly/suffolkloft) and fill in the short form to receive your personalised link to order, or call High Loft's insulation experts on 01706 248203. The offer is open to anyone in Suffolk and will close once the allocated funding has been spent.

According to The Energy Saving Trust, an uninsulated home loses a quarter of its heat through its roof. For the second year in a row, help to afford eco-friendly loft insulation is now available.

The Suffolk Climate Change Partnership (Suffolk County Council, Babergh & Mid Suffolk District Councils, East Suffolk Council, Ipswich Borough Council and West Suffolk Council) has teamed up with High Loft to help Suffolk residents make their homes warmer and save money on their energy bills.

High Loft also offers Klarna as a payment option, allowing you to spread the cost of your insulation purchase. To find out more visit [www.greensuffolk.org/at-home/funding](http://www.greensuffolk.org/at-home/funding).



- Removals
- Deliveries
- Free Quotation £

☎ 01394276958

☎ 07808043127

🌐 [www.clear-viewremovals.co.uk](http://www.clear-viewremovals.co.uk)





# Protecting and Preserving Wildlife and Public Spaces at Landguard Nature Reserve



Landguard Nature Reserve implements various measures to protect its delicate ecosystems, particularly for vulnerable bird species and grassland habitats, and to enhance public spaces for visitors:

Post and rope cordons are erected April through to the end of September to protect the Ringed Plover and characteristic vegetated shingle flora. Reserve and Bird Observatory volunteers erect the cordons and install signage to inform visitors every year. The cordons help prevent disturbances to ground-nesting birds and prevent damage plant species from people walking across these fragile areas.



Dogs and Anglers can unintentionally harm nests and scare away adult birds, abandoning chicks and leaving them vulnerable to predators. They can disrupt the birds' natural

behaviours and prevent them from feeding on the shoreline. Fishing bait and discarded food can attract predators like foxes and gulls and increases the risk of chicks being predated.

Therefore, to further protect waders like Ringed Plovers and Oystercatchers that nest directly on the ground, making their eggs and chicks highly vulnerable to being accidentally trampled or exposed to predators; dogs and anglers are excluded from the beach in front of the cordons during the breeding season (April to September). By restricting angling activities and dogs on the beach during this period, we create a safer, more tranquil environment where waders can nest, incubate their eggs, and raise their chicks with minimal human interference.

The Nature Reserve covers a large area with the southern end being vital for wildlife and unique plants. We understand that some visitors wish to enjoy the Nature Reserve with their dogs and the northern area (from Manor Terrace car

park to the concrete ramp and sea wall) is where dogs can be exercised off lead, including the beach. In the southern area (from the concrete ramp and sea wall to the very tip of the Reserve known as the point) dogs must always be on a lead, and during the months of April to the end of September must not be taken onto the beach.

With rising dog ownership, exercising dogs on leads helps reduce dog fouling and protects grassland ecosystems. Leads give owners more control, making it easier to monitor and clean up after their dogs, reducing waste in public spaces. Dog waste disrupts nutrient balance, harms wildlife, and pollutes water. It's also hazardous to humans and is quite unpleasant for all users of the Nature Reserve. Highlighting the benefits of using leads and cleaning up is essential. Cleaner grasslands reduce health risks, improve everyone's experience, and boost community pride

Designated lead-only zones provide a controlled environment beneficial for both dogs and the community. Nervous dogs, often anxious or with past traumas, can feel overwhelmed in open spaces. Lead-only zones give owners control, making interactions less intimidating and reducing dogs' anxiety. These zones also help people uneasy around dogs, like children, the elderly, and those with phobias, creating a more inclusive environment. Lead-only zones minimise conflicts and injuries, promote responsible ownership, and foster a clean, respectful public space. They are also ideal for training and rehabilitating dogs, offering a controlled setting for obedience and socialisation.

By implementing these measures, Landguard Nature Reserve strives to protect and preserve its wildlife whilst enhancing the enjoyment of the site for everyone. These proactive approaches help to nurture a harmonious balance between human recreation and wildlife conservation, supporting healthy ecosystems and creating safe, enjoyable areas for everyone.

Landguard Nature Reserve is part of The Landguard Trust. For enquires please contact [enquiries@landguardtrust.org.uk](mailto:enquiries@landguardtrust.org.uk)



## Felixstowe Allotment Association



The seed potatoes have been chitting on a window sill for the last four weeks and the red onion sets are planted in individual cells in a suitable growing medium. Yes, its allotment time again after a quiet few weeks at home huddled beside a radiator. The allotment sites in town continue to see new tenants, some of whom have rapidly got on and prepared their plots, some also remain unworked which is sad to see and may attract comment from the Town Council.

The signed tenancy agreements clearly state that plots should be cultivated. With increased activity as we race into the Spring the allotment association seeks to encourage and help its members, including the small shop at its largest site, plus as from April, cake and coffee mornings throughout the summer on the third Saturday in the month with a final BBQ in September.

The attached picture shows last years very early potatoes (Rocket) chitted early and grown in a 30L pot in compost and soil inside my cold greenhouse. We are fortunate that we can enjoy a small greenhouse and a small shed on the plots in addition to the land we till. The local shops and garden centres hold all manner of seeds and plants ready to grow on should you so decide.

One consideration of course is having the time and opportunity to then look after and protect what ever you plant. Last year, it was noticed that some early planted plots feel away with neglect as the summer came and finally went. An allotment is a considerable commitment and demands your time. But, it's great fun.



## Felixstowe Garden Club



Members of the Felixstowe Garden Club enjoyed an interesting Autumn programme of events including:

Speakers: Chris Wiley, 'Sustainability in Horticulture', Steve Gallant with a talk about 'Tools with a Mission', for which he is a volunteer. In this meeting we also had our Autumn Mini Show. Then in November we had a very interesting talk from Jim Paine (From Walnut Tree Nursery in Attleborough) titled 'Trees for all Seasons'.

Our December meeting included a very short AGM, and then we were entertained by Molly Rose, who is a member of The Three Chordettes, singing seasonal songs in which many of us joined in. Seasonal nibbles and drinks were also provided and a good time was had by all.

### Some dates for your 2025 diary:

11th March Joanne Hull – Benton End Flowers. 8th April Lynne Moore (from Moore and Moore plants Essex) Perennials to encourage pollinating insects into the garden.

13th May Garden Club Trip out (in place of evening meeting) to The Hall at Tendring and then on to Markshall in Coggeshall.

10th June Christine Lavelle - Plants of the Amazon 'in search for the Giant Waterlily, Victoria Amazonica'.

We meet every second Tuesday of the month at Old Felixstowe Community Centre. Meetings start at 7pm and free refreshments are available from 6:30pm. Free parking outside the hall and on street parking. Visitors are welcome £5 cash on the door, which will be refunded should you wish to sign up to full membership. We look forward to seeing you and hope you will spread the word and encourage friends and family to join us, you would be very welcome.

Also, we are looking for more committee members in 2025. Please have a chat, we would welcome your support. Thank you to all who currently support the Club. Please visit our website <http://felixstowedistricths.onesuffolk.net/> or Facebook page.



# FOR THE LOVE OF FELXISTOWE

## There's A New Team Supporting our Town This Summer...

Felixstowe is more than just a seaside town—it's a vibrant community of passionate business owners, creatives, and entrepreneurs who believe in its potential.

This Summer, a new team of local business owners are coming together with one goal: to put Felixstowe back on the map as the go-to destination for family, entertainment, independent shopping, bars, and dining.

## THE TEAM

The new driving force behind your town are Charles Manning of Beach Street, Jonathan Trotter of Flyer Press, Richard Ashford of Coes Felixstowe, Tracy Richer of The Waffle Shack and Ash Ibrahim of Wainwrights Estate & Letting Agents. Janine Edwards of Media Pimps and Benny Brown of Benny's Yard are breathing new life into the Love Felixstowe and Visit Felixstowe social media channels.

This team is made of local business people who share a passion for the town, and are collectively driven by the desire to want Felixstowe and its businesses to thrive.

## A SUMMER OF LOVE

**This Summer, Felixstowe will not only see the return of its tried and tested favourites, but a brand-new lineup of events designed to increase footfall, boost revenue, and showcase everything our town has to offer.**

With a focus on both the seafront and the town centre, these initiatives will not only attract visitors but also elevate the profile of local businesses, ensuring Felixstowe thrives as a vibrant destination.

The town centre will see an infusion of energy with shopping events, street markets, and cultural experiences. A dedicated 'Shop Local' campaign will feature exclusive promotions from independent retailers, encouraging visitors to explore Felixstowe beyond the beach.

Live entertainment, artisan food and craft markets, new signage and family trails will encourage exploration, creating a seamless connection between the seafront and the heart of the town.

Now is the time to embrace this exciting future and celebrate everything our town has to offer! Follow us for announcements, events, and ways to get involved.

## GET INVOLVED

**Whether you're a business owner, creative, or just someone who loves Felixstowe, you can get involved in making this Summer unforgettable and help put our town back on the map as a top destination on the Suffolk coast.**

### You can do this by:

Shopping local - keep money circulating in your community and help local businesses thrive.

Shouting about your favourite businesses online - recommend to friends, share positive reviews and tag your favourites on social media.

Attend and support local events - visit your local arts, crafts and food markets and pop-up shops and events.

If you're a business local to the area, help Love Felixstowe and Visit Felixstowe promote your business and your events by following their pages and tagging Visit Felixstowe and Love Felixstowe in your social media posts or by inviting them to collaborate! A thriving town and economy benefits us all - so lets grow!

✉ [manager@felixstowebid.co.uk](mailto:manager@felixstowebid.co.uk)



VISIT FELIXSTOWE



LOVE FELIXSTOWE

**FOLLOW US FOR ANNOUNCEMENTS,  
EVENTS, AND WAYS TO GET INVOLVED.**





**01394 284962**

**CAFÉ (OPEN 7 DAYS)**

**01394 336336**

## WHAT'S ON AT A GLANCE

### MARCH

FRI 21 **EVE** 8:00PM **Bobby Davro (18+)**  
SAT 22 **EVE** 7:30PM **Whitney: Queen of the Night**  
SUN 23 **EVE** 7:30PM **Steptoe & Son: Live!**  
FRI 28 **EVE** 8:00PM **Psychic Sally**  
SAT 29 **EVE** 7:30PM **Women in Rock**

**MUCH  
MORE ON  
OUR WEBSITE:  
FXSPA.  
CO.UK**

### APRIL

SAT 05 **EVE** 7:30PM **Legend: The Music of Bob Marley**  
FRI 11 **MAT** 3:00PM **EASTER PANTO: The Frog Prince**  
SAT 12 **EVE** 7:30PM **The Everly Brothers & Friends**  
SUN 13 **MAT** 2:00PM **EASTER PANTO: Jack & The Beanstalk**  
SAT 19 **EVE** 7:30PM **Hitmakers of the 60's**  
MON 21 **MAT** 2:30PM **The Bubble Man! (EASTER MONDAY)**  
FRI 25 **EVE** 8:00PM **Desperados: Eagles Tribute**  
SAT 26 **EVE** 7:30PM **Adult Panto: Sleeping WITH Beauty (18+)**

### MAY

FRI 02 **EVE** 8:00PM **The Manfreds**  
SAT 03 **EVE** 7:30PM **Legends of American Country**  
SUN 04 **EVE** 7:30PM **Rave On - Ultimate 50s & 60s Experience**  
FRI 09 **EVE** 7:30PM **One Night in Dublin**  
SAT 10 **EVE** 7:30PM **What's Love Got To Do With It? - Tina**  
SUN 11 **EVE** 7:30PM **Navi: King of Pop**  
SAT 17 **EVE** 7:30PM **Mercury: The Ultimate Queen Tribute**  
SUN 25 **MAT** 2:30PM **Katie Hopkins (16+) (SAT = SOLD OUT!)**  
FRI 30 **EVE** 7:30PM **Taylor Fever - Taylor Swift Tribute**  
SAT 31 **EVE** 7:30PM **David Live - David Bowie Tribute**

**PRE-SHOW DINING BOOKABLE: 01394 336 336**

THE  
**LOUNGE**  
RESTAURANT & THEATRE BAR

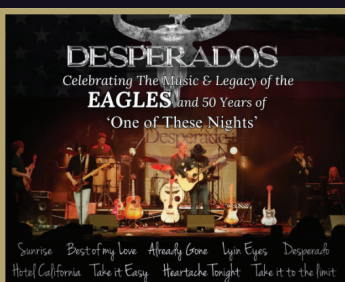
THE  
**TERRACE**  
BRASSERIE & BAR

**FOOD WITH A VIEW!**

10AM-5PM DAILY (+2h Pre-Show)



**SUN 13 APRIL - 2PM**



**FRI 25 APRIL - 8PM**



**FRI 30 MAY - 7:30PM**



**SAT 26 JULY - 7:30**





# FELIXSTOWE TOWN COUNCIL

## CHARITIES & VOLUNTARY GROUPS SUMMIT



### Felixstowe Town Council's Charities and Voluntary Groups Summit

On 20 February 2025, Felixstowe Town Council hosted the first Charities and Voluntary Groups Summit at Felixstowe School. Designed to unite charities and voluntary groups operating in Felixstowe and the surrounding area, attendees were invited to network and to attend a series of workshops hosted by experts and professionals, on topics ranging from fundraising, governance and policies, safeguarding, event management, marketing and promotion, grant funding, collaboration, and attracting, managing and training volunteers.



The event was generously supported by Laura Locke of WAMfest Felixstowe, author, presenter and podcaster Steph Mackentyre, David Gledhill of The Landguard Trust, Tracey Fuller and Clare Gibson from the Suffolk Community Foundation, Sarah Shinnie, Kevin Wegg, Chloe Lee and Matthew Townsend from East Suffolk Council, Gemma Underwood of Underwood Consulting, Jacqui Wilkinson and Deb Gibson from Community Action Suffolk and Gulshan Kayembe, the Deputy Lieutenant of Suffolk, who gave a keynote speech on the importance of charity and voluntary work in the community.



Cllr David Rowe, Mayor of Felixstowe said:

"It was great to see so many local charities and voluntary organisations attending for a day of training and networking. The workshops provided = an opportunity to hear from experts in their field on a range of subjects to help in the running of their organisation. Local charities and voluntary organisations do a fantastic job and make Felixstowe a better place, so it was inspiring to see the commitment to all work together for the good of Felixstowe".



David Gledhill, Chair of The Landguard Trust, said:

"I was pleased to have participated in the inaugural summit of charities and voluntary groups in Felixstowe and would like to express my gratitude to the Mayor of Felixstowe and Felixstowe Town Council for facilitating this event. I hope that everyone found the experience as enriching as I did! I look forward to working collaboratively to develop plans for enhanced cooperation and resource sharing among our organisations".



**If you attended the event, and would like to provide feedback for consideration, please return your feedback form to the Town Hall. If you would like to receive information about similar events, please email [holly.miles@felixstowe.gov.uk](mailto:holly.miles@felixstowe.gov.uk) with your contact details.**

Thank you to our supporters:



**SUFFOLK**  
Community  
Foundation



**STEPHANIE MACKENTYRE**  
AUTHOR – PRESENTER – PODCASTER





# Arts and Music



## Two Sisters Arts Centre

After a two month break this 'pocket venue' at the heart of the Felixstowe peninsula re-opened in March with a bang!

On Saturday March 1st 7.30pm they welcomed THE ART THEMEN TRIO

Hot from celebrating Art's 85th birthday by launching the third Organ Trio album Live In Soho at Ronnie Scott's on November 3rd 2024, Two Sisters had the honour of hosting the legends that are sax player Art Themen, organ player Pete Whittaker & drummer George Double to the opening night of the season.

And then for the next three months there is a packed programme including folk duo ARMoured MAN, THE PEAR BLOSSOMS from Texas, singer/song writer Eli Lev from North America, Old School Theatre with the sequel to Ibsen's powerful play A DOLLS HOUSE 2, marvellous soprano CHRISTINA JOHNSTON, poet LUKE WRIGHT and local vocal sensations QUATTRO AMICI to name but a few.

And to celebrate the 80th anniversary of VE Day - Black & White Productions revisit how RDF (or RADAR as it came to be known) was developed at Orfordness & Bawdsey with a new play OPERATION:RADAR Tues 1st April - Sunday 6th April

It's a race against time as Boffins Robert Watson Watt and Skip Wilkins try to come up with solutions to the impossible problems of detecting aircraft and IFF (identifying friend or foe) before they succumb to the bleak conditions of Orfordness - or Hitler unleashes the might of the Luftwaffe and wipes out the RAF before the flying boys have got their socks on!. But as they re-establish operations at Bawdsey Manor, and Churchill piles on the pressure, will Air Marshall Dowding retain his sanity long enough to be any help? And even if they do find answers - who will operate the new Chain Home Stations now all the men are being called up? With live music and a mixture of new songs and old favourites from the period, this is a chance, on this 80th Anniversary year of VE Day, to celebrate the amazing achievements of a small group of men and women who 'saved the day' and were a vital part of the victory. Tickets for all events can be reserved by phoning the Box Office 01394 279613 or purchased online @[www.ticketsource.co.uk/two-sisters-arts-centre](http://www.ticketsource.co.uk/two-sisters-arts-centre).

On Friday 7th March 7.30pm we have a Folk Double bill - amazing duo ARMoured MAN hailing from the flatlands of East Anglia who mix English and Celtic traditions, and the talent of singer/songwriters JOE & MARY whose repertoire takes the best of country/folk and americana and weaves it into honeyed goodness.

On Friday 14th March 7.30pm we have THE PEAR BLOSSOMS - who came in 2024 as Metseama. Alexander Jones (Texas, USA) and Dayna Pirso (Ontario, Canada) play a multitude of instruments as they recreate classical ragtime and the parlour music of the deep south - some of which was never recorded and so is only kept alive by talented musicians like themselves.



Friday 21st March 7.30pm is our quarterly local talent showcase LADY J's SPRING MARVELS which this time features Suffolk storyteller Robin Herne, folk duo Sóncræft, punk poet James Domestic, comedian Alex Freimuller and singer/songwriter Harry Blues

Saturday 22nd 7.30pm March international singer/songwriter ELI LEV brings music inspired by the Navajo Nation in Northern Arizona.

And Friday 28th March 7.30pm sees the return of BLAKE MORRISON & THE HOSEPIPE BAND. Never The Right Time features Blake's poetry accompanied by original music written by the band to accompany them. Tickets from [www.ticketsource.co.uk/two-sisters-arts-centre](http://www.ticketsource.co.uk/two-sisters-arts-centre) Or 01394 279613

## Felixstowe Harmonies Announces Exciting Spring and Summer Concerts



**Felixstowe Harmonies has two unmissable events coming up for lovers of popular and classical music.**

On March 29, the all-women vocal group will team up with acclaimed professional quartet Quattro Amici for A Night Like This, an unforgettable concert blending the timeless beauty of light classics with the energy and excitement of pop and the drama of musical theatre.



Felixstowe Harmonies will sing a selection of mostly contemporary songs from the entertaining repertoire for which they have become known, as well as exciting new material.

They will be led by musical director Chandra Grover and accompanied on the piano by Beth Heyburn.

The four talented singers who make up Quattro Amici - Natasha Bennet (soprano), Fiona Morris (alto), Gerry Bremner (tenor) and Howard Brooks (bass) - will perform songs from their eclectic classical and contemporary repertoire, accompanied on the piano by the inimitable Joe Richardson.

A Night Like This takes place at 7.30pm on March 29 in the comfort and superb acoustics of the Salvation Army Church, Cobbold Road, Felixstowe IP11 7EL. Tickets (£12, under 16s £6) available at [ticketsource.co.uk/whats-on/felixstowe/salvation-army-church/a-night-like-this-with-felixstowe-harmonies-and-quattro-amici/2025-03-29/19:30/t-rpoern](http://ticketsource.co.uk/whats-on/felixstowe/salvation-army-church/a-night-like-this-with-felixstowe-harmonies-and-quattro-amici/2025-03-29/19:30/t-rpoern)

The concert will be supporting the 7th Felixstowe Scouts.

Save the date... in July, Felixstowe Harmonies will welcome two American a capella ensembles, Song of Seattle and PrimeTime, for a week of musical collaboration culminating in an exciting public concert, Across the Borders, at Harvest House in Felixstowe on July 2 at 7.30pm.

The visit is the result of a friendship which began during the Covid pandemic, when choirs and choruses around the world were unable to meet and started singing together online.

Chandra wrote an uplifting song called Across the Borders which was recorded and released by Felixstowe Harmonies during the 2020 lockdown. When they heard the song, PrimeTime commissioned her to arrange it for female barbershop.

It was then recorded by the three groups, plus Ipswich based choir Stellar Acapella, under the group name of Kingdom of United Voices. This will be the first time they have sung together live. Song of Seattle and Stella Acapella will perform together at St Peter's Church in Ipswich on July 4.

Watch out for further details about the event and how to buy tickets.

[felixstoweharmonies.co.uk](http://felixstoweharmonies.co.uk)  
[youtube.com/@felixstoweharmonies](https://youtube.com/@felixstoweharmonies)  
[facebook.com/felixstoweharmonies](https://facebook.com/felixstoweharmonies)

**For further information:**  
Chandra Grover, musical director  
07954 465430  
[chandra.grover@gmail.com](mailto:chandra.grover@gmail.com)





## Music In Felixstowe - What's on this Spring?



Here we are in the spring with hope for a good year ahead. Started the year with our annual Viennese concert in the Orwell Hotel Ballroom followed by our Music Hall where there was much jollity and singing along.

As I write we are about to take a brand of this entertainment to 2 dementia care groups – it is wonderful how those afflicted with this disease can remember all the words.

We started the spring with an amazing Italian guitarist, Carlo Fierens, who flew over especially to give us “the Magic of Paganini” on March 1st at St Nicholas church at the Ferry. March 12th sees the Crissy Lee jazz quartet in the Orwell Hotel Library. Drummer Crissy was a member of the famous girl band of its day – the Ivy Benson Big Band. On March 16th Quartetto Familia presents one of the most stunning pieces of chamber music, the Schubert Cello Quintet. April 9th sees the piano duet Piano a Deux who sent us a recording to use in our lockdown weekly, a mixture of flair and fun! If you need a Big band fix come and see the Ipswich MU Big Band on April 26th at the Sailing Club where the bar will be open!

I met the young clarinettist Oliver Pigram playing in the band for Gallery Player's “Parade” and was struck by his sensitivity. It is a pleasure to be introducing him to our audiences in a concert on May 11th with Andrew Leach pianist

Emily Bennett is well known as a singer and actor. In her concert on May 28th she brings a humorous touch to popular songs both classical and modern accompanied by Greg Eaton on the piano

Editorial by Hattie Bennett

Summary of concerts coming up:

**March 12th** Crissy Lee Jazz Quartet Orwell Hotel Library 12 noon

**March 16th** Schubert Quintet St Peter & St Paul Church 3.00pm

**April 9th** Piano a Deux Orwell Hotel Library 12 noon

**April 26th** MU Big Band Ferry Sailing Club 7.30

**May 11th** Brahms clarinet trio St John's Church 3.00

**May 28th** Emily Bennett singer Greg Eaton piano Orwell Hotel Library 12 noon.

Tickets on [www.ticketsource.co.uk/music-in-felixstowe](http://www.ticketsource.co.uk/music-in-felixstowe)

Stillwater Books and Music In Felixstowe 01394 670633

Contact us - [felixstowemusic@gmail.com](mailto:felixstowemusic@gmail.com) [www.felixstowemusic.com](http://www.felixstowemusic.com)

## Felixstowe Community Choir

The choir, led by our Music Coach, professional singer and actor Emily Bennet, is looking forward to another year of singing and laughing.

As well as our weekly evening of learning new songs and enjoying some favourites, we perform at the invitation of other events around the town, especially for Music in Felixstowe, which gives us opportunities to sing with professional musicians, such as the Festival Orchestra.

We also have annual Family and Friends evening and it is the chance them to see what happens at choir on a Monday evening. This is being planned for March.

As a non-profit-making choir, at this concert we present cheques to local charities. These are nominated by members, who then vote for which charities should receive the money. Over the eleven years the choir has been running we have given £38,500 to charity. Last year the chosen charities were The League of Friends of Felixstowe Hospital, Guide Dogs for the Blind and Suffolk Animal Rescue.

There are usually around sixty singers at The Orwell Hotel each week so come and join our adult mixed choir on Monday evening's, 7.30-9.30pm, paying £5 on the door. (and there is a charity raffle). No need to book. Just turn up.

We always sing to live music, have no auditions, no sheet music nor special clothes to buy. We just love singing, especially pop and show tunes, usually with harmonies. Our two new songs to start 2025 are 'Yesterday Once More' (The Carpenters) and 'Sit down your rocking the Boat' (Guys and Dolls).



## Felixstowe Pop Chorus Respond to Local Charity



It's been just over a year since Felixstowe Pop Chorus began what would turn out to be an amazing 12 months of fundraising. January 2024 saw all 7 of the

Suffolk based choir groups raising money for charities, each at the heart of their own local community.

Felixstowe Pop Chorus - the Seasideers - were incredibly proud to lend their efforts in support of the towns Felixstowe Community First Responders, a dedicated team of trained volunteers working alongside The East of England Ambulance Service. This amazing group provide 24/7 support attending emergency call-outs to give immediate and often life-saving care in those vital minutes before an ambulance can attend. With services under increasing pressure the Responders are an invaluable asset to our town and a unanimous choice for the Felixstowe choir.

And what a phenomenal partnership it proved to be. Setting an initial target of £1000, choir members and First Responders threw themselves into a stream of events beginning with a hugely popular Shanty morning and went on to include: book and plant sales, a hamper raffle, two sell-out quiz nights, a fabulous food and wine afternoon, not to mention 3 wonderful sponsored challenges undertaken by individual choir members - a 70 mile walk and two epic swims - one across Ullswater. The beautiful Pop Chorus Constellation Ball in October saw all the charities add to their totals, leading up to the stunning tour of Constellation concerts in November, the first of which was proudly performed by the Felixstowe choir at the United Reformed Church.

These events fused with the commitment, enthusiasm and generosity shown not only by Pop Chorus members and First Responders but also their friends, families and local businesses resulted in an astounding final total of £10,219!!

An incredibly heartwarming achievement and our sincere gratitude goes to everyone who walked, swam, quizzed, raffled, supported and of course SUNG...you have been wonderful!

Pop Chorus community choirs are open to all and have over 400 members in their 7 groups around Suffolk. The Felixstowe choir is currently full, but contact [sing@popchorus.co.uk](mailto:sing@popchorus.co.uk) for more info about their other groups or to join the Felixstowe waiting list.

[www.popchorus.co.uk](http://www.popchorus.co.uk) [www.felixstoweresponders.co.uk](http://www.felixstoweresponders.co.uk)

## Felixstowe Art Group

This month the art group gets together on Tuesday 22nd April for the Annual General Meeting to discuss and review group business. At this time, we also hold the annual exhibition poster competition so please members bring along your entries. Following this a new year's membership takes place with distribution of the next year's programme of events.

Tuesday events programme for this spring include: 03/05/25 Shirley Easton, demo in creating atmosphere in oils, 27/05/25 David Gillingwater, portrait in oils demo and 24/06/25 Lenny Townsend, watercolour landscape demo. These are held at Broadway House, Orwell road 7.30pm -9.30pm. Charge of £1 members and £2 visitors.

In May we offer another opportunity to view and purchase members artwork again, this time at 142 gallery on Hamilton Road, Felixstowe 15th until 21st May.10.00am-4.00pm (close at 1.00pm on 21st) Various artists will be working on projects, questions welcome plus opportunity to have a go, all free of charge, but limited spaces.

If you have decided to either resume creating artwork or wish to develop new skills, then joining our art group may help you on your journey. We encourage art in our community and all levels are welcome.

Further information can be found at [www.felixstoweartgroup.org](http://www.felixstoweartgroup.org) and our new Facebook page.



## WAMFest 2025 Introducing...



A Felixstowe-based festival that champions the creativity of women is back for a fourth year with music, arts and wellbeing events planned for International Women's Day.

IWD has been celebrated for more than 100 years and looks to drive gender parity by positive actions. The theme

this year is Accelerate Action which ties

in perfectly with WAMFest's driving ambition to give local female talent a platform and an opportunity to shine.

WAMFest 2025 will combine an evening of live entertainment at The Alex Brasserie and a day of wellbeing events in association with two local charities on Saturday, March 8th.

The wellbeing element of the day is being organised by Lighthouse Women's Aid, a charity that support women who are the victims of domestic abuse, and Future Female Society (FFS) and will be held at the Emmaus Wellbeing Hub at Great Eastern Square in Felixstowe

Organiser Laura Locke said WAMFest keeps growing thanks to the energy and enthusiasm of all involved.

"Last year we staged two events, one in March and a three-day festival in October which in all involved more than 200 talented women who wanted to take part and share the positivity of what we can achieve together."



"I am always being asked when the next WAMFest is, and it is so encouraging to put on popular events for everyone to enjoy featuring emerging as well as more established acts."

Artists and timings are still being confirmed so please follow us on social media for the more up to date information. Subscribe for access to early bird tickets and details of how to get involved and check out our website [www.wamfestfelixstowe.art](http://www.wamfestfelixstowe.art)

## Pier Projects

### Studio Social, online artist talks

We will be talking to artists Barry Sykes and Moi Tran and we warmly invite you to join us. Save the dates or get ahead and book your place now. The talks are free and you can sign up via Eventbrite on our website: [www.pierprojects.org](http://www.pierprojects.org)

#### Barry Sykes: Sauna as Studio Monday 28 April, 7-8pm

Join artist Barry Sykes who will discuss his ongoing research project Sauna as Studio. After a number of residencies in Scandinavia, he became interested in the traditional sauna as a space to explore his interests in awkward interaction, authenticity and play through events and workshops and, more recently, as an artist studio.

Expect discussion that touches on our relationships to pleasure and participation; how we interact and understand ourselves; and experiments with stillness, laughter and relaxation.



#### Moi Tran: SLEEP Monday 19 May, 7-8pm

In this one hour conversation, Moi Tran will discuss her participatory project SLEEP.

Taking place over one evening, often in a public space, SLEEP invites people to experience 'collective sleep' and consider the intimate, everyday act from a range of personal and political perspectives.



### Views from Convalescent Hill

The rich collection of oral histories that were recorded during the project, have now been deposited at Suffolk Archives. This means that these stories will be accessible now and for future generations. Extracts can still be listened to at Felixstowe Museum when it reopens in April, or online if you prefer, on the project's digital archive. [www.vfch-archive.co.uk](http://www.vfch-archive.co.uk)

### Pier Peers

The first cohort of Pier Peers have now met for the final time as part of this new artist development programme. Plans are afoot for the peers to continue their discussions and build upon the programme. We look forward to seeing what artistic magic emerges in the basement sauna of The Finnish Church in London. To date there have been ten Sauna Reading Groups, each has been a gathering of different invited guests and a new extract to discuss.

As the Sauna Reading Group developed I was drawn to experiment with new elements that can be brought into the experience. Realising that the whole sauna experience can be a productive lens through which to examine social connection and self-reflection, And not just the sauna cabin, but the context it sits in, what makes it possible, the other elements that gather around it. This has led to a wider range of sauna activities, treating the sauna as I would my own studio or art space. I am currently working on larger scale versions of my Sauna Poses sculptures and drawings, and planning sauna-based events with other practitioners in the UK and Scandinavia. Barry was recently Artist in Residence for the British Sauna Society.

Barry Sykes (born 1976, Essex, lives and works in Walthamstow, London) makes drawings, sculptures and events that unpick our relationships to pleasure, value and participation. Using instinctive, imprecise, often absurd methods, he devises games, processes and lesson plans that ask us to reflect on how we interact and understand ourselves. Often working at the edges of value, skill and acceptable behaviour, recent activity has looked at how we channel these concerns through our bodies, in experiments with laughter, stillness, exercise and relaxation.





# Health and Wellbeing

## Doctor Surgery Capacity in Felixstowe

Most of us are concerned about the current and expected increase in our local population and the impact it will have on our services, particularly our doctors' surgeries.

Each of our three surgeries has a Patient Participation Group (PPG), which aims to represent the patients and be a critical friend of that surgery. We meet regularly with our staff teams and discuss a range of issues relevant to that practice and its patients. With the above concern in mind, the three PPGs and doctors have been meeting over the last year together with East Suffolk Council and the Ipswich and East Suffolk Alliance to try to prepare for what may be an increase of up to 10,000 new residents over the coming decade. The meetings are ongoing, but to date the surgeries have succeeded in gaining permission and new funding, from a number of sources, to add much-needed capacity. Haven Health is building extra clinical space, Howard House is extending into the previous adjacent Boots pharmacy, both gaining 5 clinical rooms, and The Grove is reconfiguring the use of some of its space to add capacity. However, it is clear that more action will be required as the town grows.

If you would like to know more about how the Patient Groups are working to support this and other matters, feel free to contact their Chairs:

- Mark Jepson (The Grove) (mark.jepson@eastssuffolk.gov.uk)
- Carol Florey (Haven Health) (carol.florey@btinternet.com)
- Alan Rose (Howard House) (acrose184@gmail.com)

## Emmaus - Felixstowe Wellbeing Hub



Since the launch of the Felixstowe Wellbeing Hub in September the sense of community within the seaside town has flourished.

The former 'Chuffers Bar' located at Great Eastern Square was taken over and co-ordinated by Emmaus Suffolk (funded by East Suffolk Council) to convert it into a community space, with the aim to offer the hub to local organisations as a location for health and wellbeing groups for residents of IP11 aged 18+.

The hubs aim is to encourage people to support their mental health and wellbeing in a warm, inviting, and inclusive environment.

Each week the hub hosts a wide range of different groups/activities from local organisations such as: Emmaus Suffolk, Communities Together East Anglia, Turning Point, Connect For Health, Macmillan Cancer Care Navigators, Hope Trust and many more.

Felixstowe Wellbeing Hub co-ordinator, Laura Locke says:

"I am privileged to have been selected as Felixstowe Hub Coordinator in September following the launch. Building on the work of the previous coordinator the Hub is now being utilised by community wellbeing organisations nearly every day of the week and I have taken many enquiries for 2025. There is still room for more!"

If you are interested in attending groups that are being hosted at the Hub or are an organisation looking for a premises for your event please email [felixstowehub@emmaussuffolk.org.uk](mailto:felixstowehub@emmaussuffolk.org.uk) for more information.

## Felixstowe Relief Charity



Over recent years, Felixstowe Relief Charity (FRC) has been providing essential items for individuals and families who are struggling with financial hardship (temporary or longer term). We can buy goods or equipment and provide funding for applicants to pursue educational opportunities that they might not otherwise be able to afford. FRC is also working with other local charities such as Compass and Pitstop to provide food vouchers and other essential services. We are also keen to support any local charities who need our help.

Anyone who has been resident in Felixstowe, Walton, Trimley St Mary, Trimley St Martin or Kirton for a minimum of 3 years can apply for financial assistance. The process is extremely simple, using a brief application form available either at the Town Hall or via the newly created website:

<https://www.felixstowereliefcharity.org>

The charity's trustees are committed to providing applicants with a response usually within four weeks and this can be even more rapid for urgent applications. Trustees meet at least once a month to ensure that funding gets to the right people as quickly as possible.

Recent successful applications have included provision of ovens, microwaves, fridges, beds, wheelchairs, sensory equipment, laptops and vocational training courses. FRC has a presence at both the Emmaus Hub in Great Eastern Square and Felixstowe Job Club at the Salvation Army every Wednesday (1000-1200) if you would like an informal chat in confidence.

One recent applicant wrote 'This charity listened... with complete compassion and no judgement'. This really sums up what Felixstowe Relief Charity is all about...

## Felixstowe and Villages Carers Group

We are a group of carers, looking after a loved one. We meet together for friendship, fun and a break from caring.

Our meetings are on the second Monday of every month at the Old Felixstowe Community Association, Ferry Road, Felixstowe, IP11 9NB from 1:00pm to 3:00pm.

If you are interested just come along, subs £3, ring the bell marked "Margaret White Hall" to be let in.

Forthcoming events include card making, a talk by Suffolk Family Carers, movement and exercise and a visit by a local poetess. Why not come and join us?





## This New Year: Become A Citizens Advice Volunteer! - 'The Best Thing I Have Done In A Long While'



### citizens advice

Happy New Year to all of you! A special thank you to those who got in touch with us for advice or information last year; we are here to help you throughout 2025 too. We start this year with a quote from a new Citizens Advice volunteer. We hope his story will inspire you to think about volunteering yourself.

"In the summer of 2023 I stopped working in my lawn care business and began to think about what to do next. I knew I wanted to do something completely different, and although running your own business can be extremely challenging it didn't push me in other ways. Learning new skills and working in a team were particularly important to me, as most of the last twenty odd years I've worked alone, either in my office or on customers' lawns.

One day, whilst trawling through jobs' pages and looking for inspiration, I saw an advert for a Generalist Advisor at Ipswich Citizens Advice. I had always been vaguely aware of the work CA do, as my mum was a volunteer and then manager at the Framlingham and Leiston CAB offices in the 80's and 90's. The job was three days a week, so wouldn't allow me to fit in my other work commitments. But it did send me to the Citizens Advice East Suffolk website (<https://caes.org.uk/>) and the 'Join Us' button.

When I read the summary of what it means to be a volunteer advisor, I knew that it was what I wanted to do. The application was filled in, then a phone call and early in the new year a meeting with Chiara (CAES Chief Executive Officer) and other potential volunteers at the Leiston office. In the first week of February, I went in for my first observation day.

I realised on my way in that I hadn't had first day nerves for a new job since 1996 when I started at Girdlestone Pumps in Woodbridge. A warm welcome helped me quickly settle in, and a few hours of listening to phone calls and sitting in on face-to-face meetings immediately gave me an idea of the diversity of issues and people who are using CA. I also had the pleasure of my first proper look at the e-learning I would need to complete.

I think it's fair to say that most of us newbie volunteers do find the training a little daunting. It can feel a bit of a slog at times but the rewards of becoming useful in the office, and the amount of help available to us, makes it very worthwhile.

Becoming a volunteer at Citizens Advice is the best thing I have done for a long while, although I do still find it hard saying the word "citizen" when answering the phone, without sounding like I'm slightly inebriated."

If, like Tim, you want a new direction whilst learning new skills in a friendly environment this year, why not go to <https://caes.org.uk/> and click on the 'Join Us' button too? ----

And if you'd like advice on any issue then please email us from our website: [www.caes.org.uk/email-service](mailto:www.caes.org.uk/email-service) or phone us on 0808 278 7866 (lines open 10-2 Mon-Fri)

Our website [www.caes.org.uk](http://www.caes.org.uk) also gives details of our drop-in outreach sessions - in Bungay, Felixstowe, Framlingham, Halesworth, Kesgrave, Kessingland, Saxmundham, Southwold and Wickham Market - and ways to contact one of our offices - in Leiston, Woodbridge, Lowestoft, Beccles and Felixstowe.

## Memory Lane Support Group



The Memory Lane support groups have been running for 10 years now. The Felixstowe group meets alternate Fridays at St Felix Hall, Gainsborough Road, Felixstowe IP11 7HT between 10.30-1pm. The Trimley group was the second group, due to the success of the Felixstowe one which started in 2022. This also meets alternate Fridays at Trimley Memorial Hall, 301 High Road, Trimley St Martin, Felixstowe IP11 0RJ, between 10-12pm.

The idea is for a safe supported place for people with memory problems to come along with a carer to have some social interaction, cup of coffee and of course cake!

Each week is different, and we have local people come to entertain, do exercise with us and crafts. The Felixstowe group also have fish and chip lunch if they wish to. This is delivered by Hamilton's across the road.



We have been supported by numerous local groups, such as Felixstowe Town Council, who support with refreshment, local Councillors, Trefoil groups, Orwell Connection Choir, and many more over the years. They have donated amazing amounts of money to the groups.

You can see on our Facebook page what we get up to and who supports us: [www.facebook.com/profile.php?id=100085193134005](https://www.facebook.com/profile.php?id=100085193134005)

We have a Go Fund me page attached to the Facebook page if anyone would like to donate towards the running of the groups.

**FELIXSTOWE VE DAY**  
80<sup>TH</sup> ANNIVERSARY  
A SHARED MOMENT OF CELEBRATION  
8 MAY 2025

**Join us to commemorate VE day and the 80th anniversary of the end of World War Two**

**Monday 5 May - The Triangle, IP11 7BL**  
9.30am to 3pm - RBL Felixstowe are hosting a celebration of VE day with a raffle, jazz band, military vehicles and more.

**Thursday 8 May**  
9am - Flag raising (Felixstowe Town Hall)  
11am - Wreath laying event & service (War memorial)  
6.30pm - Church bell ringing (various locations)  
9pm - Torch parade & beacon lighting (War memorial)

**Saturday 10 May - Martello Tower P, IP11 2EF**  
1pm to 5pm - Wartime Tea Dance, hosted by East Suffolk Council, Mayor's welcome and live entertainment from 1pm, bring a picnic from 12pm

**Sunday 11 May - Landguard Fort**  
Audio-visual commemoration projections



# Active Felixstowe

## Felixstowe Road Runners - Wesel Marathon



At the start of January a number of Felixstowe Road Runners converged on Felixstowe's twin town, Wesel, in Germany their third annual winter marathon and half marathon. Being just over the Dutch border, it is accessible as self drive on the Harwich-Hook of Holland ferry or via the Channel tunnel, taking in 5 countries in one day, as we did.

After settling into our apartments, we regrouped for a walk around Wesel to take in some of the history and atmosphere of what is quite a large, impressive town, located close to the banks of the River Rhine.

Sunday morning, race day, greeted us with a thin blanket of snow, a beautiful reminder that the forecast for the race was wet and cold!

The race was held at the Wesel Sportplatz and involved either 3 (half marathon) or 6 (marathon) laps around the Auesee lake. Conditions got progressively worse as

the rain set in and added a lot more water turning the slush to large puddles. Layering and fuelling became increasingly important as the combination of rain, cold and fatigue took their toll. Excellent gritty performances from the FRR contingent were capped by age group wins for Dave Solomon in the marathon and Nic Stevenson in the half!

We soon recovered and made use of our laundry facilities before heading out with our German hosts to a Greek restaurant for a very enjoyable meal.



Some of us even made it back to the lake on the Monday morning for a recovery "ice bath" alongside the coots and grebes before heading home to the UK.

All-in-all a brilliant weekend and highly recommended for any runners looking for a new challenge!

Article provided by Torben Wood



## KW AUTOS

- MoT preparation
- Air Conditioning
- All makes of vehicle
- Collection & Delivery
- Servicing and Repairs
- Exhausts ● Tyres
- Diagnostics

the Good Garage Scheme

FREE  
Spring  
Check

**CALL US NOW ON**  
**01394 284886**

Units 1-6, 79 Undercliff Rd. West,  
Felixstowe IP11 2AD

**E:** [service@kw-autos.co.uk](mailto:service@kw-autos.co.uk)

**W:** [www.kw-autos.co.uk](http://www.kw-autos.co.uk)

## A Heartfelt Thanks to Our Community at the Reopening of Felixstowe Opportunity Group



The recent reopening of the Felixstowe Opportunity Group was a day of celebration and gratitude, and we would like to extend our sincerest thanks to everyone who helped make this event possible.

First and foremost, a huge thank you to the Mayor of Felixstowe and the Felixstowe Town Council their unwavering support. The grant that enabled the refurbishment of our beloved playgroup was a true gift to our community. In particular, we are incredibly grateful to the Town Council's Civic and Community

Committee whose dedication and hard work behind securing the funding made this all possible. These efforts have provided our children with an updated, safe, and inspiring environment to learn and play.

On the day of the reopening, the playroom was full of excitement as our little visitors joyfully explored the new features, including the new climbing wall and sensory wall. It was wonderful to see so many young faces filled with wonder as they tried out the new activities, making it a memorable experience for all.

Once again, thank you to Felixstowe Town Council, the Mayor, and all of our wonderful visitors for your continued support. We are looking forward to many more years of growth, learning, and fun at the Felixstowe Opportunity Group!





## Felixstowe Judo Club: A Year of Growth and Exciting Plans Ahead

Felixstowe Judo Club has had a fantastic year, with our recent AGM highlighting a 22% increase in class attendance compared to 2023. Both our junior and senior sessions, held every Monday and Friday, have grown, welcoming members aged 5 to 60+. This boost in participation has not only strengthened our club but also helped us invest in the next generation of coaches.



We're proud to announce that Sebastiaan Lensen has achieved his UK Coaching Level 2, while Daisy Emmett and Emily Burrell have earned their UK Coaching Level 1. In addition, they have completed training in First Aid, Child Welfare, and DBS checks, ensuring the highest standards of safety and professionalism for our members.

Looking ahead to 2025, we're excited to host our next 'open' competition, welcoming judo clubs from across East Anglia to Felixstowe for our summer tournament. This event not only brings thrilling competition but also invites visitors to enjoy everything our wonderful seaside town has to offer during the warmer months.

And with Easter approaching, if you're wondering how to keep the kids active, why not bring them along for a free trial lesson? We'll be open throughout the holidays, except for Good Friday and Easter Monday.

If you'd like to get involved, whether as a beginner or a returning judoka, we'd love to welcome you to Felixstowe Judo Club!

Visit: [www.felixstowejudo.club](http://www.felixstowejudo.club) or telephone 01394248004.

Photo attached with Dominic Cremer and Emily Burrell with Chelsie Giles, GB Gold Medal Judo Olympian. Taken at a recent 'Master Class'.

## Felixstowe Air Cadets Around the UK



The Felixstowe Air Cadets don't just offer excellent flying and gliding opportunities, but also the chance for our young adults to go around the country on weekend and weeklong 'camps' and courses.

In August our Cadets went to RAF Cosford for a week where we visited engineering facilities, the RAF police, the RAF Museum, the RAF

School of radio, RAF Virtual reality facilities in addition to many competitive events like tug of war and soft ball.

Throughout the year our adventure training camps take Felixstowians to Windemere, Blencathra, North Wales and Thetford where Cadets undertake canoeing, kayaking, mountain biking, trekking & navigation, rock climbing and fun days out.

On a Corps level our Cadets get the opportunity to attend the RAFAC Drill and Ceremonial camp to take part in arms and sword drill, they can go to the Royal International Air Tattoo at RAF Fairford where the Air Cadets are integral to running one of the world biggest and most innovative air shows or even the National Aerospace camp where they can get skills and contacts to set them up for a high flying life. Cadets can also attend gold level weeklong first aid, cyber and flying courses at RAF stations.

Between 12-17 Years old, and in School Year 8 or above? This could be you!

Email [356@rafac.mod.gov.uk](mailto:356@rafac.mod.gov.uk) to sign up!

Pilot Officer Reece Seaman RAFAC |  
Officer Commanding | 356 (Felixstowe)  
Squadron ATC | RAF Air Cadets | Adastral  
Close, off Carr Road, Felixstowe, Suffolk,  
IP11 3RX |



## Felixstowe and Corinthians Cricket Club - A Brief History



It often surprises me that so many people in the town seem to be unaware that there is a thriving cricket club that has been in existence, in one form or another, for over 150 years.

Felixstowe Cricket club was formed in 1870 and has inhabited the The Town Ground at Dellwood Avenue all this time sharing the outfield with the football club. Felixstowe Corinthians Cricket club was formed in 1952 and they played their matches at Coronation Park. Both clubs continued for many years until they recognised a need to bring new players into the game. This led to the two clubs collaboratively forming an independent Junior club that would ensure a steady stream of young players progressing into the senior game, at either club. Felixstowe and Corinthians Youth Cricket club was formed in 2007 and the numbers of juniors quickly swelled to well over 100. Many of the senior players became qualified coaches ensuring quality, fun and safe training sessions for boys and girls of all ages, no matter of their ability.

Finally, in 2015, the three clubs formally merged and all cricket is now played under the new club name of Felixstowe and Corinthians Cricket club.

Today, the club continues to go from strength to strength. We currently field three men's teams on a Saturday and one on a Sunday. Our Ladies field two league hardball teams and one softball team. Recent successes include our Men's first team being promoted to Division 2 of the Two Counties League and our Ladies 1st and 2nd teams both having been league champions.

Our Juniors continue to provide a stream of new players and it is great to see so many youngsters enjoying training on Friday evenings, whilst their parents enjoy socialising in the summer sunshine.

So, as we prepare for the 2025 season, we would love to welcome anyone to find out more about the club, come and watch a match or training (senior or juniors), join in or perhaps even volunteer in some way. We welcome old and new players of any age, gender or ability to come and give cricket a try. Everyone is welcome.

In the Summer, Junior training is held on Friday evenings at Dellwood Avenue starting from mid-April. The emphasis of our training is all about having fun whilst learning essential cricketing skills. Ladies training follows on from Juniors on Friday evenings whilst the men train on Wednesday evenings.

The ECB's Allstars and Dynamos cricket programmes will also take place again this summer, more details to follow on that and also on the Academy programme.

We have arranged some winter indoor training dates. Junior age groups run in line with school years as follows.

U7's - school years 1 & 2

U9's - years 3 & 4

U11's - years 5 & 6

U13's - years 7 & 8

U15's - years 9 & 10

School years 11 and above should attend men's or ladies training.

If you would like more details about any of our training sessions, squads or the club in general please contact any of the following.

- Karl Wilks - Club Chairperson - [info@fandccc.co.uk](mailto:info@fandccc.co.uk)
- Jamie Burrows - Chair of Cricket - [info@fandccc.co.uk](mailto:info@fandccc.co.uk)
- Lisa Jones - Chair of Juniors - [juniocricket@fandccc.co.uk](mailto:juniocricket@fandccc.co.uk)

Or follow us on instagram @fccricketclub  
or Facebook @Felixstowe and Corinthians Cricket Club



# Your Community Stories

## Felixstowe Family History Society

Felixstowe Family History Society welcome Janette Robinson on 12 March 2025 to regale her talk on 'You'll make a lovely sergeant' - The WW1 Experience of Flora Sandes.

Our popular Quiz and Social evening on Wednesday 9 April 2025 at 1930, with Quizmaster Paul Voller, ready to challenge 'quizzers' with general knowledge and specialist subject questions. Teams of 4 to 6 or join a table. \*\*booking essential\*\* more details to follow on our website or via local publicity.

Come along to Broadway House, Orwell Road, Felixstowe IP11 7DD. There is a large and free (after 1800) car park adjacent to Broadway House, the entrance is in Highfield Road, Felixstowe IP11 7BZ.

Please arrive for a 1930 start; allowing time to sign in, buy some raffle tickets, find a seat and have a chat with friends before the quiz starts.

There is no charge for members of the Felixstowe Family History Society and Felixstowe History and Museum Society; visitors are welcome £3.00 cash at the door. Membership details on the website.

Future dates for your calendar –

14 May – Speaker subject to be advised

11 June – Old Newspapers – Pip Wright

9 July – Kinder Transport – Mike Levy

In addition to our Wednesday evening meetings, the Society offers monthly drop-in sessions, to support members/non-members with ancestry enquiries. These are held on Friday 28 March, 25 April, 30 May and 27 June at Broadway House from 10.15 a.m. till 12 noon.

For further information, please contact the Committee via the website <https://felixstowefhs.onesuffolk.net> or Facebook page.

## Landguard: Where guarding the land means so much more



Landguard Point is a site of historical and environmental significance, not just locally but nationally, boasting a unique mixture of experiences that the whole family can enjoy.

Landguard Fort provides an invaluable glimpse into the area's strategic and military importance over the centuries through

guided tours, immersive displays and events such as April's Napoleonic and World War 2 reenactments, October's child friendly Trick or Treat and the always popular Christmas Event. They open for Half Term and their new season starts 29th March.

Felixstowe Museum sits next door and curates an extensive collection of artifacts and exhibits that chronicle the social and cultural history of Felixstowe and its surroundings as showcased in their upcoming exhibition "Beside the Seaside". It's also part of the fabric of the local community, tackling loneliness through the winter by running warm space sessions for the community, providing a welcoming space to get to know people and learn about local history. They're open from April until the end of October.



All of this is supported by a passionate and friendly team of volunteers who work all year round to maintain the sites and make the incredible array of events possible. If you're interested in getting involved visit our website or use the email below.

Reaching the Point is easy enough whether by road, the 77 bus from Ipswich or the Harwich Harbour Foot Ferry from Harwich and Shotley which lands on the beach near the hugely popular View Point Café with access to plenty of parking.

Website: [landguard.com](http://landguard.com) Email: [enquiries@landguardtrust.org.uk](mailto:enquiries@landguardtrust.org.uk)

## 'CATWALK on the COAST' – Felixstowe Fashion Show

We are excited to announce that due to popular demand, the Felixstowe Mayor's Charities are once again staging the Felixstowe Fashion Show.

On 3rd April at St Johns church in Felixstowe, the event, 'CATWALK on the COAST' promises to be an emotionally charged and even more spectacular night than previously presented.

Once again the show will feature the latest designs available from Felixstowe's local retailers, however this year's models have been selected from the two Mayor's charities represented; primarily Breast Friends CIC (survivors of breast cancer) but also Landguard Trust. Choreographer, Brendon Dale said 'The back story of survival, blossoming forth and giving back to the community is a powerful one. I'm so proud of our models who are stepping up to share their journeys - I don't think there will be a dry eye in the house!'

This year the show will also be supported by singer Chelsea Francis, Comedian Louie Green and local events co-ordinator and radio DJ Laura Locke. Once again there will also be an opportunity for shopping, extra time built in to ensure no one misses out.

The organising committee said, 'We want this whole show to be an experience from the moment individuals arrive through to when they leave – Spring will definitely have arrived.'



'We have been blown away by the support from local sponsors: MCP, MSC, Morrisons, Giant Gestures and Scarborough opticians to name but just a few.'

Ticket sales will launch on March the 8th and can be purchased via the QR Card shown or by visiting Coes store in Felixstowe. Don't miss out!





## Old Felixstowe Community Association - Update from the Chair



Sadly, OFCA has lost a great friend, Anne Lee passed away on 15th January. Anne had for many years produced the invoices for the Association for which we are most grateful. Anne carried out this role in a quiet conscientious manner and was a great asset to the Association. Anne helped to run a stall at the Community Market along with Margaret Lamacraft and Ann Trusselle raising valuable funds for OFCA, she was also an Area Representative for many years

delivering newsletters and collecting subscriptions. We will miss Anne dearly and our thoughts are with her family at this time.

We were extremely fortunate to receive two donations before Christmas with Maritime Cargo Processing donating £250 and Jean Brackley £100. Our grateful thanks go to you both and the money will be used to maintain the Community Centre and make improvements.

Vickie White, our Treasurer was recently contacted by the People's Postcode Lottery and informed that OFCA will receive a grant of £15,000 as part of the Millionaire Street Grant Fund, this is amazing news! The Association are currently having plans drawn up to repair/replace the roof on the Jane Bolton Lounge so the money from the People's Postcode Lottery will certainly help with this project.

The Community Markets continue to thrive and with the Parish Nurses and councillors in attendance it really does add to the community spirit. Although January and February were extremely chilly days, we were delighted to see so many people join us and stay for a welcome cuppa and a slice of cake. Our continued thanks go to Angela and her team from the Brackenbury WI who provide the refreshments. The Markets are held on the second Saturday of each month except for July and August. Please make a note of the date of our Summer Fair which is on Saturday 12th July. Organisations that regularly use the Community Centre raise valuable funds which continue to maintain and enhance the Centre.

If you would like to make a booking for a private function, please contact the Administrator on 07494 599265 or email [ofcabookings@gmail.com](mailto:ofcabookings@gmail.com). The bookings calendar can be viewed via our website at [www.oudfelixstoweca.org.uk](http://www.oudfelixstoweca.org.uk).

Best wishes, Celia Page

## Landguard Rotary Club

Recently, Rotarians had fun constructing two Tawny Owl boxes and then in mid-January we fixed them to two trees in our local Woodland Trust wood, Abbey Grove Wood in North Felixstowe.

If you are interested to find out what else our club gets up to you can e-mail our Secretary Jon Fison [landguardsecretary@hotmail.co.uk](mailto:landguardsecretary@hotmail.co.uk) or visit our website by searching for 'The Rotary Club of Felixstowe Landguard'



We meet and eat good food at Nutshells about twice a month, but we have a varied programme of mostly weekly visits and events. We had a very enjoyable Burns Night with our President Philip Young stabbing the Haggis which had been piped in by Jim Young and we danced until late to the Ceilidh Band, 'Inertia Reel'

This year our motto is, 'Fun, Friendship and Service'. New members are welcome.



## What's Happening @ Level Two Youth Project - Spring Onwards

### Exciting New Home Ed Gardening Club!

We're launching a Home Ed Gardening Club at the Community Allotment! Starting late February, we'll meet every Thursday (12-2 PM) and travel via minibus (weather permitting). Young people can learn valuable skills, help with weeding, rebuilding pathways, creating raised beds, and even making a new scarecrow!



We're also looking for volunteers to support us. Whether you're a gardening enthusiast or just keen to help, we'd love to hear from you. Interested? Email [Fydg@leveltwo.org](mailto:Fydg@leveltwo.org) and let's grow something amazing together!

For the second year running, we are thrilled to host an art exhibition at 142 Gallery, Felixstowe (22-28 May 2025), showcasing the incredible talent of young people.

This exhibition will be a vibrant collection of artwork, celebrating creativity in all its forms. We are excited to highlight the artistic achievements of Felixstowe's young people.

All proceeds will go directly towards supporting young people and their families.

Join us Thursday-Tuesday (10 AM-4 PM) and Wednesday (10 AM-1 PM) at 142 Gallery, Hamilton Road, IP11 7DS.

### Support Our WWII-Themed Arts Award Project!

To commemorate VE80, we are running a WWII-themed Arts Award Project, concluding in a special performance at Landguard Fort on 2nd August.

We need your help!

Can you donate or lend WWII memorabilia, costumes, or artifacts?

Are you skilled in costume-making or storytelling?

Help us bring history to life and create an unforgettable experience for young people.

Get in touch today! Email [Fydg@leveltwo.org](mailto:Fydg@leveltwo.org)



## Felixstowe Offshore Radio

After a busy 2024, in which we attended various events, and gave presentations marking the 60th anniversary of the start of Radio Caroline, anchored off the Felixstowe coast, the winter months have seen us concentrating more on posting items onto our Facebook page - <https://www.facebook.com/felixstoweandoffshoreradio>

The main news has been the sad passing on December 31st of the legendary DJ, Johnnie Walker. On August 14th 1967, he, along with fellow DJ Robbie Dale, sailed from Felixstowe Dock Basin, out to the Mi Amigo, home of Radio Caroline South, as the station continued broadcasting, in defiance of the Marine Offences Act, which came into force at midnight on the 14th.

We posted a couple of photos of Johnnie, and such was the love and affection for him, that the first received over 2000 'likes', and comments from music stars Leo Sayer and Mary Wilde! The second photo then received over 4000 'likes', far in excess of the numbers received on anything we've ever posted before!

Felixstowe Museum have invited us to have a display again in 2025, which will be different from last year (and in a different room) and we're hoping to include a pictorial tribute to Johnnie Walker, along with some Felixstowe connected offshore radio memories from 40, 50 and 60 years ago!

Do come and take a look during the year and watch our Facebook page to see other events that we are involved with!



## Fairfield and Colneis



**The Federation of  
Fairfield and Colneis**



Reading is a central part of our school curriculum. A love of reading opens up new worlds, builds imagination and enhances vocabulary - it is the cornerstone of the work we do and opens up all other avenues of learning. We have spent lots of time and resources recently upgrading our libraries at both schools.

With the amazing support of the incredibly talented local artist, Simon Loxley, we have created environments that we hope inspire and motivate children to a lifelong love of reading. Both libraries will have soon had their official openings and are being well used and enjoyed by the children.



One of my favourite activities when working with children is to read them a story! I am currently reading 'The House of Clouds' by Lisa Thompson to our

Year 6 children. As I cannot be present every week to do this in person, each week I am recording the next part of the story and this is being played to them weekly. I enjoy then catching up with the children when I see them around the school to see what they think of the story so far.



## Your Local Funeral Professionals

*Serving families in Suffolk  
for many years*



**GORDON RODWELL  
FUNERAL DIRECTORS**

79 St Andrews Road,  
Felixstowe IP11 7BW  
01394 671 999



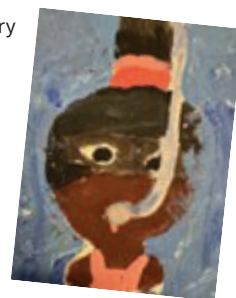
We are proud to be Dignity Funeral Directors,  
providing a 5 star service to families across the UK.

## Langer Primary Academy Arts Festival



The week beginning 3rd February saw schools across the Unity School Partnership coming together to participate in two exceptional Arts Festivals. This initiative enabled a range of digital workshops and classroom activities, with

students from both secondary and primary schools engaging in separate, enriching festivals.



Teachers signed up for live arts workshops throughout the week and also had access to guided digital exhibition tours. This comprehensive approach allowed pupils to exhibit their creative work digitally, showcasing their talents to the CUSP (Curriculum with Unity Schools Partnership) Art & Design primary partnership and their parents.

The theme for this year's CUSP Art Festival was "Celebrating Belonging through Art." In the words of Dr Brené Brown, "True belonging doesn't require that we change who we are. It requires that we be who we are." This powerful message resonated deeply with students as they explored their creativity.

At Langer Primary School in Felixstowe, every class thrived while learning new techniques and producing remarkable artworks as part of the festival. Students collaborated with other schools and artists from our curriculum partnership for live lessons and projects, celebrating their achievements at each stage. The culmination of their efforts will now be proudly displayed at the school, symbolising not only their artistic talents but also the sense of community fostered through this inspiring initiative. The CUSP Arts Festival truly delivered a celebration of creativity, connection, and belonging.



## Book Your Weddings and Civil Partnership Ceremonies at Felixstowe Town Hall



**FELIXSTOWE  
TOWN COUNCIL**

Getting married this year? Felixstowe Town Hall is the perfect venue for your special day!

With stunning beachfront views, rooms to cater for

wedding parties of all sizes and any needs you may have, the Town Hall is the ideal place to tie the knot.



You can find more information about booking a wedding or civil partnership ceremony at Felixstowe Town Hall at [www.felixstowe.gov.uk/council-services/weddings](http://www.felixstowe.gov.uk/council-services/weddings)

Contact [sue.faversham@felixstowe.gov.uk](mailto:sue.faversham@felixstowe.gov.uk) with your enquiries and any questions or call 01394 288 191.





# Investing in Play: How CIL Funding is Transforming Felixstowe's Parks

Felixstowe's play areas are continuing to benefit from significant investment, thanks to **Community Infrastructure Levy (CIL) funding**. Following the successful upgrades at Cavendish Park (a new multi-use games area), **Gosford Way** (14 new pieces of play equipment), and **Allenby Park** (a widened and improved 5-a-side pitch with additional play features), the Town Council is excited to announce even more improvements coming this year.



- **£10,000 towards the relocation of the Felixstowe Lions' workshop facilities**, with additional support from East Suffolk Council.
- **Refurbishment of the park gates at Allenby Park**, preserving this key community space.
- **£30,000 ring-fenced towards Level Two's proposed Music and Digital Arts Centre at Beach Street** - a fantastic project currently awaiting planning permission.

Back in 2019, a major project saw **£27,808 of local CIL funding** contribute to a **£265,000 investment** in play facilities for toddlers, juniors, and teenagers—enhancing spaces for children of all ages. More recently, in 2023, **Gosford Way and Allenby Park** received further upgrades, with new pathways funded by **£23,665 of CIL funding**.

Now, the focus turns to **Walton Recreation Ground and Seaton Road Park**, where brand-new play equipment is set to be installed this summer. This ambitious upgrade is being funded through **£100,000 of local CIL (£50,000 per site)** from the Town Council, matched by additional funding from East Suffolk Council's District CIL. These investments are ensuring that our parks remain vibrant, accessible, and fun for local families.

## Beyond Play Areas: Supporting Our Community

CIL funding isn't just improving play spaces - it's also supporting other valuable community projects. Recent approvals include:

- **£10,000 towards a £15,000 project** for a **Community and Education Hut** at **Cowpasture Allotments**, providing a space for learning and engagement.

## What is CIL and How Can You Apply?

The **Community Infrastructure Levy (CIL)** is a planning charge introduced by the **Planning Act 2008** to help local authorities fund infrastructure projects that support development in their area. Funding is available at both the **District and local levels**, and Felixstowe Town Council welcomes applications for community projects.



Expressions of interest for **Felixstowe Town Council CIL funding** can be made at any time. Projects should focus on the **provision, improvement, replacement, operation, or maintenance of infrastructure** - or address the demands that development places on the area.

For more information on applying to the **Town Council's CIL fund**, contact **debbie.frost@felixstowe.gov.uk**.

For details on the **East Suffolk Council CIL fund**, including the **next application window (1 April – 31 May)**, visit their website or email **CIL@eastsuffolk.gov.uk**.

## Felixstowe Library - What's on offer



**Top Time - Every Tuesday - 2pm in The Hadwen Room**  
Come along to our social group for older people and join in with our activities. Get involved with games and chat with others in a friendly and relaxed atmosphere.

**Stay and Play - Every Thursday 10.15am - 11.45am Children's section**  
Stay & Play groups for parents and babies. Socialise and meet other parents and carers at our Stay & Play sessions for preschool children and their adults.

**Open Space - Every Thursday - 2pm in The Hadwen Room**  
If you're looking to meet new people and find out about local events and resources to support your wellbeing, come to an Open Space drop-in. Everyone is welcome.

**Wordplay and Tot Rock - Every Friday 9.10am & 10.10am sessions - Children's section**  
Story time and nursery rhyme fun for preschoolers.

**Baby Bounce - Every Friday 11.10am - Children's section**  
Age 0-1yrs - meet new parents and enjoy songs and sensory activities with your baby.

**Lego Club - Every Saturday 10-3pm - in The Hadwen Room**  
Join us for our weekly Lego Club! Get involved in fun creative building activities in the welcoming space of the library. Let your imagination run wild and create something unique!

**Barclays Bank - each week on Tuesdays and Thursdays 9am-5pm.**  
Help with anything from money management and financial health, to buying or improving your home and supporting your business.

**Sunday Funday - 2nd Sunday of the Month 10.30am-2.30pm**

Fun crafts and activities in the Children's section. A different theme each month.

**East Suffolk Council - Every Friday - 10am-4pm**

A drop-in service run by the council to help and support any ESC queries.

**Friends of Felixstowe Library AGM - Saturday 15th March 10am in Room at the top.**

**Suffolk Libraries Day Saturday 22nd March**

A fun day to celebrate and promote Suffolk libraries. See your local library for information.

### Room Hire:

The Hadwen Room - Max 40 people  
The Room at the top - Max 40 people  
Small meeting room - Max 4 people  
Cost: £11 per hour for community/charity/private bookings,  
£16.50 per hour for commercial/statutory bookings

### Opening Hours:

Mon - 10am - 4pm  
Tue - 9am - 5.30pm  
Wed - 9am - 7.30pm  
Fri - 9am - 5.30pm  
Sat - 9am - 5pm  
Sun - 10am-4pm

Crescent Road, Felixstowe, IP11 7BY  
[www.suffolklibraries.co.uk/visit/libraries/felixstowe-library](http://www.suffolklibraries.co.uk/visit/libraries/felixstowe-library)



## East Suffolk's Amazing... let's keep it that way!



East Suffolk Council invests every penny we can in services to help maintain the beauty and cleanliness of East Suffolk but sometimes admit that it can never necessarily be enough.

We are working on different ways we can help maintain the beauty of East Suffolk, which includes encouraging more residents to take active pride in their local area.

There is already an incredible network of volunteers who work to help keep our district beautiful, with regular litter-picks, planting, and an all-round effort to keep their local area clean. If you would like to play your part, we would love you to get involved.

One of the ways you can help is by organising a community litter pick - we are able to lend out equipment for organised litter picks, including Hi-Viz vests, litter pickers, bags and bag hoops. Provided that we are notified in advance, we can also remove bagged and other waste items collected from agreed collection points.

Find out more at [www.eastsuffolk.gov.uk/amazing](http://www.eastsuffolk.gov.uk/amazing)

## Growing wild!



116 wild spaces will be left to 'grow wild' during the spring and summer as part of East Suffolk Council's 'Nature at Work' scheme, which is being delivered in partnership with environmental charity Groundwork East.

New signs have been installed on council-owned land to help identify the wild areas where grass cutting will be limited to twice per year for the benefit of pollinators such as bees and butterflies. The signs feature a QR code directing people to further information about the scheme, including how residents and community groups can get involved. A map of all the sites is available online, and photos from the locations will be added throughout the year.

Additionally, Groundwork East will be visiting local schools to help them create their own Nature at Work sites in their school grounds.  
[www.eastsuffolk.gov.uk/nature-at-work](http://www.eastsuffolk.gov.uk/nature-at-work)

## Easter recycling and bin collections

There are no planned changes to bin collections over the Easter weekend so please put your bins out for collection as usual. Cardboard boxes (from all your Easter eggs) can be flattened and put in your recycling bin alongside any plastic moulding.

Most foil wrapping can be recycled as well. If unsure, do the scrunch test - if it scrunches and doesn't spring back, it's safe to put in your recycling bin. If it springs back, it most likely contains plastic and can't be recycled so it's best to pop this in your general waste bin.

If you're unsure what goes into what bin, you can check at [www.eastsuffolk.gov.uk/recycling](http://www.eastsuffolk.gov.uk/recycling)  
And you can check your collection day, and what colour bin is being collected at [www.eastsuffolk.gov.uk/bin-collection](http://www.eastsuffolk.gov.uk/bin-collection)



## Visit Martello Tower P

Old Fort Rd,  
Felixstowe, IP11 2EF

April - September 2025




- Saturday 19 April 9.30am - 12.30pm**  
Easter open morning & start point for Fort to Fort walk with the Mayor 11am.
- Saturday 10 May 12.30pm - 5pm**  
VE80 Wartime Tea dance and picnic
- Friday 15 August 11am - 3pm**  
Maritime Family Fun Open Day
- Sunday 21 September 11am - 3pm**  
Heritage Open Day

# SUNDAY LUNCH

Served every **Sunday** between **12 noon - 2pm**


**NON MEMBERS WELCOME**




2 COURSE  
£20.00



3 COURSE  
£24.00





CALL TO BOOK YOUR TABLE ON  
**01394 286834**



# 40 years of Felixstowe in flower

## Celebrate the 40th Anniversary of Felixstowe in Flower



**F**irst introduced in 1985, Felixstowe in Flower has been brightening the town with floral displays for 40 years.

**This year marks the 40th Anniversary of Felixstowe In Flower, and we need your support to make it the best year yet! Whether you're a seasoned gardener or a beginner, there's something for everyone to get involved with.**

Cllr Mike Deacon, who was instrumental in introducing the now 40-year-old scheme, recalls his thought process in 1985 fondly:

*"I've often been asked what inspired me to introduce Felixstowe in Flower way back in 1985. As a newly elected Councillor in 1983, I became increasingly concerned that*

*Felixstowe was being let down by the then District Council. It was simply becoming very shabby, the gardens were run down, weeds growing in gutters and pavements, litter and dogs fouling the streets - all a problem.*

*Requests to remedy the situation were largely ignored. It was at about that time on a visit to Ipswich my wife and I were both impressed with the floral decorations in their town centre. The thought then occurred to me that if Felixstowe Town Council could produce something similar, it might encourage the District Council into tidying the town up. And so it was that with the help of the then very enthusiastic Town Clerk Susan Robinson, her staff and the backing of the Town Council, we launched Felixstowe in Flower with 60 sponsored hanging baskets in Hamilton Road in the summer of 1985.*

*In my wildest dreams, I would never have believed that Felixstowe in Flower would have grown into the success it is today, being embraced by the community with floral displays throughout the town every summer."*

### Sponsor a Hanging Basket, Tub or Trough

If you are a local business, you can sponsor a tub, basket or trough, filled with a beautiful floral display, which will be expertly cared for year-round by the Felixstowe Town Council Grounds Team. The floral display will be adorned with a plaque with the name and logo of your business. The floral displays are located in popular areas of the town, such as along Hamilton Road, Walton High Street, and Sea Road, ensuring that your business will be well advertised.

Alternatively, why not sponsor a basket in memory of a loved one? The display will be adorned with their name and cared for daily by the Felixstowe Town Council Grounds Team.



### Enter One of Our FREE Competitions

Whether you are a keen gardener, a beginner, a local business, or an allotmentee, there's a Felixstowe in Flower competition for you! There are 14 categories to enter for free, ranging from the best hanging basket and the best commercial garden to the seaside and creative arrangement theme. You can find a competition form at [www.felixstowe.gov.uk/felixstowe-in-flower](http://www.felixstowe.gov.uk/felixstowe-in-flower). The winners of each category will be invited to the illustrious Felixstowe in Flower Awards Ceremony and presented with a trophy in recognition of their entry.

### Join us at the Launch

Join us as we launch 40 years of Felixstowe in Flower at Felixstowe Triangle on 3 June. Meet local community groups and businesses, and cast your vote in the Councillors' flower pot competition as we kickstart a fabulous 40-year celebration of everything floral in Felixstowe.



**Thank you to our main sponsor,  
David Button Independent Funeral Directors**

**DAVID BUTTON**  
INDEPENDENT FUNERAL DIRECTORS



At David Button Funeral Directors, we make sure your loved one's final farewell is as perfect as possible.

You will see the same member of staff who will guide you every step of the way and if you can't come to us, we will come to you.

**A Traditional All Inclusive Cremation Service  
at Seven Hills £3,695.**

Our fees are available to view on our website. Pre-paid funeral plans are also available.

The Old Bank, 225 High Street, Walton, Felixstowe, Suffolk IP11 9DT.

Tel: 01394 200793 Mob: 07546 754531

[www.davidbuttonfuneraldirectors.co.uk](http://www.davidbuttonfuneraldirectors.co.uk)





# DO YOU KNOW A COMMUNITY HERO?

## NOMINATE THEM FOR A CIVIC AWARD!

find a nomination form at  
[www.felixstowe.gov.uk/civic-awards](http://www.felixstowe.gov.uk/civic-awards)

TELL US WHO  
YOU THINK  
DESERVES TO BE  
RECOGNISED WITH  
A CIVIC AWARD!

DEADLINE  
31 MARCH



### COMPETITION FORM:



Do you have green fingers? Why not enter our FREE Felixstowe in Flower competitions?

I would like to enter the following categories (please 'x' all appropriate boxes):



**Residential Competitions**  
(open to private homes and non-business gardens):

- ☐ Private Front Garden: Best Floral Container
- ☐ Private Front Garden: Best Planting Scheme
- ☐ Town Centre: Best Floral Container
- ☐ Floral Balcony

**Commercial Competitions**  
(open to all Felixstowe businesses & community groups):

- ☐ Commercial Premises: Garden
- ☐ Commercial Premises: Non-Garden
- ☐ Commercial Premises: Best Floral Container
- ☐ Residential Home: Best Floral Container
- ☐ Hotel/Guest House: Best Floral Container
- ☐ Public House: Best Floral Container

Open to all:

- ☐ Creative Arrangement
- ☐ Best Use of Colour
- ☐ Best Sustainable Planting
- ☐ Seaside Theme
- ☐ Best Newcomer
- ☐ Tallest Sunflower  
(16 years and under)

**Allotment Competitions:**

- ☐ Best Newcomer
- ☐ Best Allotment
- ☐ Best Allotment

Fill in your details here:

Email:

Telephone:

Address:

Name:

Don't forget to  
fill out your  
details below  
and return to  
the Town Hall!