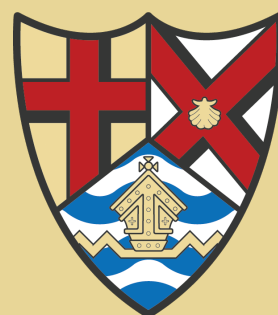


The Seasonal Magazine for Felixstowe Residents

Winter 2021

Issue 7



FELIXSTOWE
TOWN COUNCIL



Christmas in Felixstowe
Community Stories
Your Local Environment
Town Council News
...and Much More



New Public Art Project
Page 6



Bright Future for Ferry
Page 7



Christmas Shopping
Page 12



Felixstowe BID
Page 17



Grants
Page 22

EST. 1898

THE ORWELL HOTEL

FELIXSTOWE



Bar - Restaurant - Lounge

reservations@theorwellhotel.co.uk



01394 285511

Hello everyone and welcome to this Winter edition



their business when the first lockdown happened in March. They will be grateful for your continued support. With seafront and town centre businesses voting for a Business Improvement District (BID), there will be more initiatives to attract more shoppers in future and buck the trend experienced by so many others.

With the recent news that Suffolk, like most of the country, must now adhere to Tier 2 restrictions, we have been working with local organisations in preparation to support people at Christmas. They provide such a fantastic service throughout the year, but we appreciate that Christmas can be a particularly

daunting time, for families as well as those living on the own. The Mayoress and I will be joining other volunteers and delivering meals prepared by the Salvation Army on Christmas Day. It is a shame that the Christmas Day dip had to be postponed until Easter. I was hoping that might mean the sea is a little warmer when I take part. Apparently not!

Following Joan Rich's outstanding achievement in walking 102 laps of Allenby Park by her 102nd birthday, the Town Council planted a tree at the park to celebrate her efforts and say thank you. I know Joan was delighted with this recognition - well done Joan!

On the 29th January 2021 the Deputy Mayor will lead our commemorations for local residents who lost their lives during the North Sea floods in 1953, a wreath will be laid at the Flood Memorial on Langer Road following a short service led by Rev Andrew Dotchin.

I am sure we are all looking forward to a return to some sense of normality during 2021, but in the meantime, I wish you all a happy and healthy Christmas. Please think of neighbours and friends who may be on their own, a small gesture of friendship will go a long way.

Councillor Mark Jepson

It has been a year like no other, not just for me as Mayor but for the whole town. However, I have been so impressed by the resilience of our great community and how local organisations have worked together to support those in need. The Town Council's recent bulletin which was sent to every home in November highlighted much of the support available. Please contact us if you did not receive a copy.

Despite the challenges, it was important that the town was still able to pay its respects to those lost to war, so on Remembrance Sunday the Deputy Lieutenants of Suffolk and members of the British Legion joined us for poignant service led by Rev. Andrew Dotchin. Whilst it was a shame that the usual parade could not take place, all wreaths were able to be laid in a socially-distanced fashion and many were able to observe the silence, either in person or by following online.

I was part of a very small group who congregated to switch on the Christmas lights with the Lions Club of Felixstowe who have done so well this year to deliver a festive atmosphere in the town centre in the face of adversity. I hope that we will all do our bit too and support local businesses, whether online or in store, which have had such a tough time recently. You will have seen, from my many zoom interviews with independent shop owners, how resilient and innovative they have needed to be, particularly those that had only just started

Take care of your town shop local



To all our volunteers, local organisations, businesses, workers and residents - Felixstowe Town Council says THANK YOU for all that you have done to support our town and keep us going during this pandemic. #lovefelixstowe

Your Magazine

We would be pleased to receive relevant articles from community groups and voluntary organisations letting residents know what is happening in the Felixstowe area.

If your group would like to submit an article for consideration in the next quarterly edition (Spring, covering March 2021 - June 2021) send it via email to enquiries@felixstowe.gov.uk by Friday 12th February.

If possible, include hi-res images/photos and your group's logo. You don't have to send a fully-written article - bullet points or a few notes are fine to help point us in the right direction - but it must be no longer than 250 words.

We will aim to cover many different articles from issue to issue and will seek to offer a fair and equal representation for community groups throughout the town. Sometimes articles may have to be edited, shortened or dropped altogether.

Advertising

Limited advertising space is available in our magazine to support the cost of publication, with priority given to local, reputable businesses.

Call 01394 282086 or email enquiries@felixstowe.gov.uk for prices and to book your ad.

Cover photo by Stephen Rampley

Getting in Touch

The Town Hall is currently open to the public by appointment only due to the coronavirus, please telephone during office hours (9am - 4pm Mon-Fri) or email us at any time. We'd love to hear from you. Phone: **01394 282086**

Email: enquiries@felixstowe.gov.uk

Address:

**Felixstowe Town Hall
Undercliff Road West
Felixstowe
IP11 2AG**

www.felixstowe.gov.uk



Felixstowe is a
Fairtrade
Town

Who do I talk to about.....?

With three tiers of local government in Suffolk it can be confusing knowing which authority to contact about local matters or a particular service.

This brief list outlines some of the key areas covered by each council to help untangle the web and to show who does what in your area.



Felixstowe Town Council is the council closest to its residents and is responsible for:

- The office of the Town Mayor, Deputy Mayor and Mayoral engagements
- Awarding grants to support local community group and charities
- Remembrance events in conjunction with the Felixstowe Branch of the Royal British Legion
- The upkeep of Felixstowe's War and Flood memorials
- Felixstowe's Community Emergency Plan
- Felixstowe in Flower floral basket scheme and competitions
- Floral bedding at the Triangle and seafront
- Supporting the provision of Community Public Access Defibrillators
- Felixstowe Town Hall – the administrative home of the Town Council, a local base for partner community services such as the Suffolk County Council Registrar and Felixstowe Forward, open to the public for meetings and a popular wedding venue
- Broadway House – the home of Felixstowe Old People's Welfare Association (FOPWA)
- Walton Community Hall – available for private and community hire
- Allotment sites at Cowpasture, Ferry Road, Railway Hill and Taunton Road
- Felixstowe Cemetery and its Gardens of Rest
- The Felixstowe Civic Awards scheme to recognise our local community heroes
- Supporting the town's twinning and partnership arrangements with the German towns of Wesel and Salzwedel
- Felixstowe Youth Forum

- Funding the Christmas Lights (supported by the Lions Club of Felixstowe)
 - Providing the Christmas Ice Rink (sponsored by the East of England Coop)
 - Annual funding contribution to key local service providers including Felixstowe Volunteer Coast Patrol Rescue Service, Level Two Youth Project, Felixstowe Forward, Citizens' Advice and the Landguard Partnership
 - Making representations on local planning applications, strategic plans and consultations
 - Representing the community at around 20 outside bodies, organisations and partnerships affecting many aspects of life in Felixstowe
- Call 01394 282086 or visit www.felixstowe.gov.uk



East Suffolk Council provide a range of regulatory and community services across the whole of the East Suffolk district and is responsible for:

- The collection of council tax and business rates
- Local planning and building regulations
- Kerbside waste and recycling collections, including fly tipping (in conjunction with East Suffolk Norse)
- Benefits
- Community Safety
- Elections
- Street cleaning
- Housing needs
- Maintaining the resort of Felixstowe and the provision of beach huts

- Maintenance of Felixstowe's public parks, open spaces and play areas (in conjunction with East Suffolk Norse)
- Public car parks, on-street parking patrolling (Police are responsible for obstruction or illegal on street parking)
- Licensing, Environmental and Port Health
- Leisure services (in conjunction with Places Leisure)

Call 0333 016 2000 or visit www.eastsuffolk.gov.uk



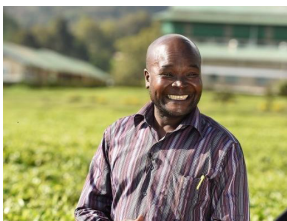
Suffolk County Council is the top tier of local government, providing services on a county-wide basis and is responsible for:

providing services on a county-wide basis and is responsible for:

- Highways (except motorways and major A roads which are the responsibility of Highways England)
- Education and Libraries
- Social services
- Trading standards
- Public transport
- Bus passes and disabled parking permits
- Registry of births, deaths and marriages
- Most street lighting, pavements, rights of way, footpaths and cycle ways
- Adoption and fostering
- Fire and rescue services
- Waste and Recycling centres

Call 0345 606 6067 or visit www.suffolk.gov.uk

Fairtrade – Link to Kenya



The Felixstowe Fairtrade Forum is one of a number of Fairtrade groups in Suffolk supporting an ambitious plan to link Suffolk schools with Kenya during Fairtrade Fortnight 2021 (22 Feb – 7 March). The link, via Zoom, will be with Patrick Kaberia, a Fairtrade tea farmer from the Michimikuru Tea Co-operative. Many will remember Patrick from his tour of Suffolk in 2016, launched at Felixstowe Town Hall.

The link is being organised by the Suffolk Association of Fairtrade Towns (SAFT), of which Felixstowe is an active member. Forum members Alan Muchal and Robin Pattinson are closely involved with the project and have put together information and resources to support it, which can be seen at www.suffolkfairtrade.org.uk. Local school, Trimley St Mary Primary, is one of three key schools across Suffolk involved in planning the link. Two children from the school will put questions on Fairtrade to Patrick.

The link will be made available to all schools in Suffolk and the Forum will be encouraging Felixstowe schools to participate.

Let there be Lights!

The hugely popular Christmas lights switch on show, organised every year the Lions Club of Felixstowe and supported by Felixstowe Town Council, would have seen thousands coming from across the region to enjoy festive entertainment and browse the shops and craft market prior to the official switch on. Yet, even with the event having to be cancelled like so many others this year, the volunteers at the Lions were determined to bring some Christmas cheer to the town and 'get the lights on!'.

Once everything had been installed, an appropriately distanced crew were on hand for the Mayor of Felixstowe, Councillor Mark Jepson, to switch on the display. President of the Lions Club of Felixstowe, Richard Woolnough, said: "We have worked for many weeks to get the Christmas Lights ready and were pleased to invite the Mayor to switch them on for the town. None of us would have wanted this dreadful pandemic but this town has worked amazingly well together, and it has brought us all closer together as a great team."

The Mayor of Felixstowe, Cllr Mark Jepson, said: "Whilst the cancellation of the big switch on event was a real shame, it wasn't unexpected. In any year, designing, installing, maintaining and homing the lights takes a great deal of effort, so it is remarkable that the Lions managed to abide by the restrictions and get this year's display up and running at all. It is to their credit that their determination will result in bringing some much needed Christmas cheer to the town and I'd like to say thanks to all the members of the Lions Club of Felixstowe for such a great job."



Wave to Santa Tour

The Lions Club of Felixstowe announce our 'Wave to Santa' tour of Felixstowe.

Look out for Santa from 5.30pm to 7.30pm on the following dates:

Thursday 10 December

Most roads in the area bounded by Valley Road, Garrison Lane, Goyfield Avenue, Mill Road, Cobbold Road, Ranelagh Road (North), St Andrews Road.

Friday 11 December

Most roads in Walton

Monday 14 December

The area bounded by Westmoreland Road, Western Avenue and Cliff Road

Tuesday 15 December

Most roads in Kirton

Wednesday 16 December

Most roads in the area bounded by Grange Road, Langley Avenue, Elizabeth Way

Thursday 17 December

Most roads in the area bounded by Brook Lane, Bath Hill, Constable Road, Croutel Road, Beatrice Avenue, Links Avenue, Lansdowne Road, High Road East

Friday 18 December

Most roads in the area of Wesel Avenue and Grange Farm Avenue

Please do not approach the sleigh.

We will not knock on doors or collect any money, but if you want to make a donation please text **FXSANTA2** to 70085 to donate £2, or **FXSANTA5** to donate £5, and so on. All money received will be used to help local families either by ourselves or via BASIC or the Salvation Army.

Santa is super excited to see you all and we're thrilled he has been able to add Felixstowe to his busy schedule.

The Lions Club of Felixstowe wish you a very Happy Christmas.



David Button

Independent Funeral Directors



We're here...

You will see the same member of staff who will guide you every step of the way and if you can't come to us, we will come to you.

A simple inclusive cremation at Seven Hills or Ipswich Crematorium £2,965.

Our fees are available to view on our website.

Pre-paid funeral plans are also available.

The Old Bank, 225 High Street, Walton, Felixstowe, Suffolk IP11 9DT. Tel: 01394 200793 Mob: 07546 754531

info@davidbuttonfunerals.co.uk

www.davidbuttonfuneraldirectors.co.uk



Felixstowe "Community" Radio



One of our most important words at Felixstowe Radio is "Community". Community is what we're about, it's what we know, it's what we do.

As soon as the first lockdown was announced, we realised what an important role we had to play. As a community radio station, we live and work with our listeners. We understand local issues and concerns.

In a very short time we could adapt our schedules and working arrangements to ensure we kept broadcasting throughout the period. Our programmes reflected all the voluntary work going on in the town, as well guidance and advice from the Government and Felixstowe Town Council. The links we made with local voluntary groups and organisations have continued to work

throughout. We continued to bring information, entertainment and news. Our favourite news story was the day we had to report that Felixstowe Radio had been awarded The Community Award from Felixstowe Town Council ... THANK YOU

Over the last few months Felixstowe Radio has had to dramatically change the way we work. The world has changed, people's working patterns have changed, the word "local" has taken on a greater importance. At the same time, the radio industry is changing. Many independent stations are no longer based in our area. Other radio stations have had to streamline, again with the loss of that local feeling. Felixstowe Radio is based in our town. Our volunteers live locally, shop locally and understand the things that matter locally.

Our programmes are many and varied. Daniel Moore welcomes you into a new weekday with his breakfast Show. Then there's "The Contessa", Clare Rowe with her legendary Friday Night Rock Show. Newbies like Dave 7 soothes you with great music in the afternoon, while Graham Malster-Smith takes you into the world of club music.

We are also proud of our long-standing programmes with Roger Pettit recently celebrating his tenth year presenting his Roots & Shoots programme. We are proud to be local, proud to be here for you.

Pier Projects announce new public art programme

Pier Projects are excited to share news of a new public art programme that they will be launching in Felixstowe early next year. Now in their fourth year, the art agency has confirmed funding to work with the community on a programme of new artworks, events and a programme with young people until 2022.

As part of the programme two artists will be commissioned to create new work located outside of any galleries, that responds specifically to Felixstowe. Pier Projects will be seeking to form a Community Panel, made up of local residents that will be brought together to select one of the artists. 'Slow Social' events have already been established by the agency. These events aim to bring together creatives in the town and will be relaunched (online initially) to support and promote the local artist community.

These plans build on three previous projects with artists Caroline Wright, Anna Brownsted and Adam Bridgland which took place on the promenade, at Landguard Fort, Level Two and on Felixstowe high street. Adam Bridgland's wooden sculpture 'Upon Every Wave our Wellbeing Rides' remains visible in Old Felixstowe in front of the martello tower / golf course. Natalie Pace and Louise Stratford of Pier Projects said: "2020 has been hugely challenging, impacting us all mentally, physically, socially and financially. Art can have a huge role to play in helping us all process what is happening to us and around us. We want to support people's wellbeing by offering opportunities to be involved and shape these artistic projects, forging connections between people that have been limited, develop creativity whilst also supporting tourism to the town".

More information will be shared in the New Year at an 'Open Hut Weekend' at a seafront beachhut to discuss the plans, subject to social distancing measures.

This work has been supported by Arts Council England, the Artists Information Company (A-N) and Suffolk County Council through Enabling Communities Fund.



MEMORIAL STONES



INDEPENDENT - HAND CRAFTED - UNIQUE

Local workshop and showroom

Hand crafted memorials

Free quotations

Experienced team

To request a memorial brochure
01394 421 046

Office@spencerwix.co.uk

www.spencerwix.co.uk

Our showroom and workshop
Unit 2 Rendlesham Mews,
Rendlesham, Suffolk, IP12 2SZ

SPENCER WIX
STONE MASON LTD



INDEPENDENT - HAND CRAFTED - UNIQUE

Black & White Productions

We are a community based theatre company that was formed in 2005 with the specific aim of writing and producing new work embedded in the history of the local area in which we live and work. We use locally based theatre practitioners that have either had or are undergoing training, or have had many years experience, and we specialise in taking

productions out into the community and performing in site specific locations which have included churches, Landguard Fort, Bawdsey Transmitter Block and the Bartlet Convalescent Home.

We have covered such diverse subjects as George Orwell, Thomas Wolsey, West Indian immigration, refugees, Charles Dickens, The Bartlet, the development of RADAR, climate change and the Cold War. We perform a drama/ cabaret every year with a different theme - 'Harry's Bar' - which has a good following.

We have also performed promenade plays - two about Felixstowe where the audience have been transported on a vintage bus to various historical sites where they have then 'discovered' characters associated with them - and one in Aldeburgh to celebrate the life of Elizabeth Garrett Anderson. Last year we took a play to the Edinburgh Fringe about Suffragists vs Suffragettes and the life of Suffolk girl Millicent Fawcett, which obtained a four star review and two nights of sell out audiences.

We now have a permanent base at Two Sisters Arts Centre - but are determined to continue taking our productions out into the community once the present covid restrictions ease. See our website for more information

www.blackandwhiteproductions.org.uk



Tree Planted at Allenby Park in Honour of Joan Rich



On November 2nd Joan was invited to a tree planting attended by the Mayor Mark Jepson, Mayoress Julie Jepson, Councillors Darren Aitchison and Keith Robinson, and Joan's daughter, Diane Rich. Luckily for them, two attendants from East Suffolk Norse dug the hole!

A plaque beneath the new tree reads: "Planted by Felixstowe Town Council in honour of retired nurse, Joan Rich. On her 102nd birthday Joan completed her mission of walking 102 laps of this park to raise funds for the NHS during the 2020 coronavirus pandemic."

Before Joan's NHS walk, Allenby Park has played a big part in her life. As a child and for most of her adulthood she lived nearby; her 1960s/70s nursing duties included retrieving hospital patients who enjoyed the park's calm; and in the 1940s Joan was posted and billeted close to another Allenby Park, in Jerusalem.

Joan said, 'I can't believe anyone thinks I'm special enough to have an Allenby Park tree, especially one close to the tree dedicated to Queen Elizabeth on her 75th year on the throne.' Laughing, Joan added, 'Just think what that will do to my reputation, and hers! Whatever would Lord Allenby make of it all?'

Many of the wonderful trees in Allenby Park hold special memories for Felixstowe residents, past and present. Joan hopes that spring blossom and summer cherries from her tree will add extra cheer. Joan's walk has raised almost £34,500, including Gift Aid. There's still time to make a donation for the NHS at :

www.justgiving.com/fundraising/Diane-Rich1

St Elizabeth Hospice fundraising

Independent Suffolk charity St Elizabeth Hospice's Christmas Day Dip 2020 has been cancelled due to the ongoing global pandemic but alternative festive fundraising plans will be announced soon.

Due to take place on Christmas Day the event, which has been held for over 15 years, usually sees hundreds of swimmers don festive outfits before plunging into the icy cold North Sea at Felixstowe beach.

However, due to concerns for public safety during the ongoing Covid-19 pandemic and in line with government guidance concerning social distancing, the Suffolk charity has taken the decision to cancel this year's event. Joanne Rodger, Events and Challenges Manager at St Elizabeth Hospice, explained: "Christmas Day Dip is a well-loved event not only for the participants, but for the families that visit to watch, as well as volunteers and staff. "We know so many of you will be disappointed we are not putting on the event, but we must stress that the hospice puts a lot of safety provisions in place on the day and we strongly advise against visiting Felixstowe to undertake the Dip on your own."

However, following the success of the Virtual Midnight Walk 2020, the hospice has plans to introduce new, virtual festive fundraising events for supporters to take part in this Christmas. As well as this, the events organising team will also look to host an Easter Day Dip for 2021, where supporters can dress up in Easter themed clothing while enjoying slightly warmer water temperatures.



Harwich Harbour Ferry Service to Resume



The owners of the Harwich Harbour Ferry have thanked well-wishers and announced the future looks brighter for the much-loved vessel which was damaged in a storm.

The historic foot and bicycle ferry link between Harwich, Shotley and Felixstowe was put in jeopardy in September when the 40-foot vessel was ripped from her mooring at Ha'penny Pier, Harwich. The ferry is so popular that a GoFundMe appeal was set up by a well-wisher to help get her back in service.

Owners Chris and Lucy Zemann, who have successfully built up the business since taking it over in 2015, have been working tirelessly to repair the 40-foot former lifeboat. Lucy said: "It's a long, labour-intensive mission, but she is being slowly brought back to life. We want to send our overwhelming thanks to everyone who has sent words of encouragement and to every single person that has donated. These generous donations, together with the insurance, means we are optimistic the ferry will be not only be fully repaired, but also brought back into service."

Large sections of the port side of the boat were damaged and the electronic ticketing system and other equipment lost. The engine was flooded and the most urgent need was to preserve it. It was taken apart, serviced and put back together with new gaskets and cylinders.

Lucy added: "It really means so much to know how loved and needed the ferry is, so we want to thank everyone who has helped us in any way."



AP LAFLIN
BUILDERS LTD

FREE
QUOTATION SERVICE

PASSIONATE ABOUT QUALITY, VALUE AND AFFORDABILITY



Our skilled in-house team can turn your dream into reality

All types of building work

- Bespoke kitchens
- bathrooms & wet rooms
- extensions & newbuilds
- Refurbishments
- Plumbing & Heating
- Electrical & Rewiring
- Plastering & Decorating
- Block Paving & Driveways
- patios & Landscaping

JOINERY WORKSHOP ON SITE FOR BESPOKE SERVICES

CALL NOW FOR YOUR FREE QUOTATION ON
01394 270573

7 Bridge Road, Felixstowe, Suffolk IP11 7SL
www.laflinbuilders.co.uk - info@laflinbuilders.co.uk



FACTS celebrate 30th Year Anniversary



Facts should have been celebrating their 30th year serving the community of Felixstowe and the surrounding villages. We were formed in 1990 to enable those in the community who for whatever reason could not get out, to provide a transport solution to enable them to attend medical appointments, go shopping, visit friends or attend various clubs and activities. In those 30 years Facts has grown from borrowing one mini bus to owning four, all able to accommodate disabled passengers and their wheelchairs. We have become an invaluable and well established service provider to the community. 30 years is certainly something to be proud of and plans were well underway to celebrate this achievement with the local community, then suddenly the Covid pandemic struck and everything stopped!

The whole country was affected, with virtually everything closing down and the over 70s' and the vulnerable self isolating. We were no longer able to carry out our day to day established service. We were still able to take people to hospital appointments but these slowed down to less than one per week.

We did not park our buses up though, we contacted the local pharmacies and offered to deliver medication to those who were unable to collect it. The Day Lewis pharmacy at the Grove immediately took us up on our offer and in 3 months of lockdown we delivered over 9500 items of prescription medicine.

We also delivered over 400 food parcels on behalf of the Basic Life charity. We did not charge for these services and our income was considerably reduced. However Day Lewis set up a go fund page. Also Felixstowe Town Council very kindly afforded us a grant, this together with the generosity of the local community enabled us to keep operating for the foreseeable future. A big thank you to Day Lewis, Felixstowe Town Council and everybody who donated, it was fantastic.

We have now had a second lockdown and despite many clubs and organisations shutting down again, we are still operating. We are there for the community to take them to their medical appointments and essential shopping and journeys. A big thank you to our fantastic team of volunteers. We are still hopeful that going forward we will get to celebrate our proud landmark. Hopefully life will eventually get back to normal and we would love to celebrate with you – the loyal community!

If you think we can be of assistance to you, or you would like to volunteer, please call Dave or Jane on 01394 282857. Look at our website www.factsbus.org.uk or follow us on Facebook.

Citizens Advice are here to help



Here at Citizens Advice in Felixstowe we have been providing a telephone and email service to our clients since day one of the March lockdown – and we have been providing that service throughout.



We are continuing to operate both from the office and from home and can be contacted on 0300 330 9016 or online at advice@felixstowecab.org.uk

Unfortunately we are unable to offer a face-to-face service at this current time.

We are available to help with any issue that is bothering you and if we feel that your problem might be better helped by another organisation we will give you their contact details.

We have worked to make our office 'Covid-safe' for our staff & advisers with protective screens in place and regular cleaning and have provided our advisers with additional IT and telephony equipment to enable them to operate from home.

We have seen a 25% increase in the number of people seeking our help over these difficult months and we are expecting this increase to continue for several months to come.

**EAT OUT
AT HOME**

**FREE DELIVERY
ON ALL MEALS
ORDERED
FROM
THE GOLF CLUB**

Call 01394 286834
option 5 for details

**DELIVERY
& COLLECTION**

**ALL MEALS £7.50 EXCEPT SUNDAY
ROAST WHICH IS £10 FOR ONE COURSE OR
£12.50 FOR TWO COURSES.**

All prices include delivery. Menus available online at:
felixstowegolf.co.uk/catering_and_functions.

Subscribe to our welcome membership for only £12
per year to receive our menus directly to your inbox.

Please pre-book
at least one day
before or for
Sundays by
Friday

Felixstowe Ferry Golf Club News

Winter at any Golf Club is traditionally a quiet time with short days and cold weather for the members to contend with. At the time of writing this article we also have a second lockdown with the course and clubhouse closed completely. The only staff able to make the most of this time are our green keepers who can get lots of remedial work done without being hindered by members playing and getting in their way!

Our Chef is also very busy with our continuing delivery service keeping the community fed and safe.

We are lucky here though, as we have such beautiful views on our course and such varied wildlife from kestrels to muntjac deer, owls to stoats. Many of our members take amazing photographs, sunrises, sunsets, winter scenes, summer scenes, often with the iconic Martello Tower in the background. Our present lady captain has put together a charity calendar for 2021 with 12 beautiful pictures and this is now available to buy from the Club. Please give us a call if you would like to purchase one.

Although it is quiet on the course we are moving forward with the exciting plans for our new Clubhouse and hope to get it started in the spring. This building will make such a difference, not just for our members but also for the community and we can't wait to see it take shape. It will provide employment for local people and attract visitors to our town. Golf, as we know, provides an ideal form of exercise and can be enjoyed by all age groups.

Let's keep Felixstowe on the map, keep it thriving, support it in anyway we can. We at FFGC plan on doing just that for future generations so that they can enjoy living here as much as we do.

Felixstowe Society of Allotment and Leisure Gardeners (FSALG)



Autumn is with us now, and as the poet John Keats said, it is the "Season of mists and mellow fruitfulness". As you can see, there have been some huge pumpkins ready for Halloween, this one was 6 feet in circumference! Now carved to entertain two little witches.

Up at the allotments, most of the vegetables have been harvested, potatoes have been bagged up, onions have been thoroughly dried off for Winter storage, tomatoes have been turned into soup, together with a bumper crop of peas which are now in the freezer to keep us going through the coming months. There are of course still lots of hardy vegetables to gather through the

Winter as well like leeks, parsnips, celeriac, and not forgetting Brussel sprouts for the turkey on Christmas day. After a very dry August and September, rain came just in time so that the soil was softened allowing frenetic activity getting Autumn digging done;- now we can relax a bit!

In October at Ferry Road allotments, we were delighted to welcome some of the next generation of gardeners from Year 1 from Kingsfleet School. Socially distanced of course, they had the joys of growing vegetables explained to them by some of our committee members. It is very satisfying that they seemed to enjoy the visit, sending lots of thank you cards to the organisers.



Felixstowe Town Council has four allotment sites, located at:

Cowpasture, Candlet Road, 312 plots

Ferry Road, 94 plots

Railway Hill, Coronation Drive, 44 plots

Taunton Road, 19 plots

A 40% discount on the basic allotment rent is offered to senior citizens or those in receipt of benefits on a single or joint tenancy, provided that at least one tenant qualifies. See our website for more information. A waiting list is in operation with plots expected to become available soon. If you are interested in taking on a plot, please contact our Business Services Officer, Sue Faversham via

sue.faversham@felixstowe.gov.uk

Why have an Allotment?

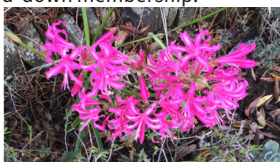
- An affordable source of fresh fruit and vegetables
- Reduces your exposure to pesticides
- Gives you fresh air and healthy exercise
- Helps reduce stress and can give you a sense of achievement
- Good for the environment, providing green spaces and wildlife habitats
- Plots which are cultivated to a high standard could even win one of the allotment prizes at the Felixstowe in Flower Awards.



As Autumn drifts into Winter, gardeners are looking for a few colder days of weather and maybe some frosts? Autumn should be the time for cleaning the beds, preparing soil and planting, taking hardwood cuttings, scarifying lawns, dividing perennials and maybe sorting out the garden pond. But no, our gardens are still blooming and unsure about what season we're actually in.

We are all still in the grip of COVID19 and we can only be thankful that our gardens provide us with a little calm in what has become a very stressful year. The Garden Club has been unable to hold our monthly meetings at Old Felixstowe Community Centre since March and are now planning to hold some Zoom meetings in order to engage with our locked-down membership.

Since March, Jeremy Pratt has been sending out regular blogs showing pictures of his and other members' gardens but as there is less to see now these will stop until Spring. The picture below is of nerines which are some of the garden's most colourful plants.



We look forward to 2021 in the hope that we can all meet again and share our gardening passions over a cup of tea and a chat, fingers crossed that it won't be too long. For further information email info@felixstowegardenclub.co.uk

Need to recycle your Christmas Tree?

St Elizabeth Hospice will be running a Treecycling service from the 8th to the 11th January.

This will see the hospice team and volunteers collecting and recycling Christmas trees from homes and businesses in Felixstowe for a donation. To book visit www.charityxmastreecollection.com.



Environmental Information

This magazine has been printed and produced locally using responsibly sourced stock. The paper meets the ISO 9001, ISO 14001, ECF, FSC certifications. Please recycle this magazine when you have finished with it.

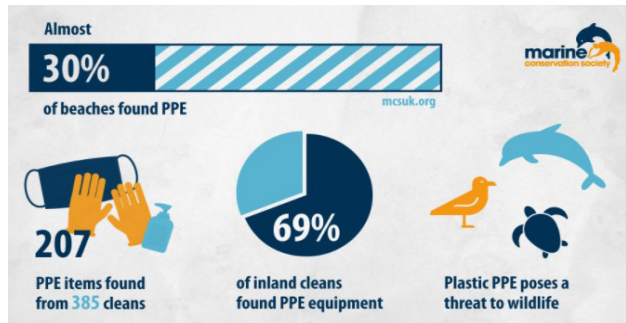
DID you know?

As with most agricultural crops, trees are planted in rotation. Once mature – after 7 to 11 years – they are harvested. But only 9% of the total plantation area is felled annually. New saplings are planted in the same year, at an average rate of 260,000 new trees a day. This is what makes the paper we use renewable, and good for the environment in capturing carbon.

Litter-Free Felixstowe Anniversary

This year the anniversary of Litter-Free Felixstowe (LFF) looks very different with no group meetings, individuals have been encouraged to litter-pick on their own individual walks during the second Lockdown. The positive news is that more and more people are getting involved and the group membership is now nearly 900. It seems everyone wants to help protect the environment and make a difference.

LFF volunteers supported the Great British September Clean (organised by Keep Britain Tidy:11-25 September) which also coincided with the Great British Beach Clean (organised by Marine Conservation Society 18-25 September). Unfortunately, the rise in the amount of PPE being found on our streets has raised concerns and Lizzie Prior, Great British Beach Clean coordinator said 'Considering mask wearing was only made mandatory in shops in England in late July ... the sharp increase in PPE litter should be a word of warning for what could be a new form of litter polluting our beaches in the future'. Indeed, it has been found that 69%



of litterpicks across the country are finding PPE items. Clearly everyone needs to be very careful in disposing of their masks and gloves. Drinks containers, fast-food wrappers, salt/sauce sachets and cigarette butts continue to be found particularly around the seafront area and also at the Grove.

Filming of the Litter-Free Felixstowe video has continued with local children talking about the need to look after the Environment and protect wildlife everywhere. It is hoped that this will be rolled out to schools this winter as part of an educational campaign. For more information contact debbie@plastic-free-felixstowe.com



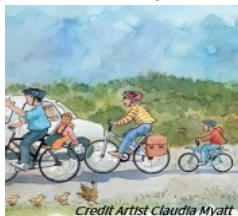
Expect and Respect



In 2013/14, the Greenprint Forum supported a project to establish a small number of Quiet Lanes in rural parts of the Suffolk Coast & Heaths AONB, and Gulpher Road was one of the 13 rural lanes to benefit from this new status – and we are working with volunteers from Quiet Lanes Suffolk to boost this by around 200 newly designated lanes county-wide by this time in 2021.

Quiet Lanes are a national designation intended to maintain the tranquility of rural lanes and promote greater respect and consideration between different types of road users, helping those who use these picturesque lanes to get about by active means such as walking, cycling, and horse riding to feel safer using them.

Quiet Lanes do not restrict the use of the road by motorists. The designations serve as a reminder to motorists, and indeed all road users, that they should EXPECT to encounter people using any form of transport, as well as animals, using any part of the width of the road – meaning that all users need to be prepared to meet anything around the next blind bend from a lone pedestrian, a group of rambblers or cyclists, a flock of livestock being herded between fields, all the way up to a combine harvester or other agricultural behemoth – and to treat all other users of the space with RESPECT regardless of their mode of transport or legitimate use of the road. For more information about Quiet Lanes, visit QuietLanesSuffolk.co.uk



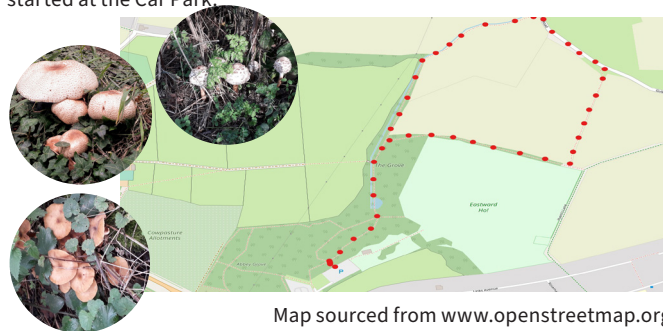
The Greenprint Forum is a voluntary network of people and organisations dedicated to environmental action in the community to improve our quality of life and living standards whilst reducing our environmental impact. It is free to join – see east.suffolk.gov.uk/east-suffolk-greenprint-forum for more information.



Walk around the Grove this Winter

A pleasant woodland and field walk. Approx 1.5 miles Easy going under foot, flat but can be muddy.

1. Park in The Grove carpark opposite the Grove Medical Centre.
2. Enter The Grove Woodland directly from the car park.
3. Turn right along the woodland path through The Grove.
4. Continue on the path through the trees until the woodland becomes a narrow strip.
5. Keep going straight on along the path till you reach Gulpher Rd.
6. Turn right along Gulpher Rd until you reach a footpath sign on the right.
7. Take this footpath till you reach a junction of footpaths and turn right.
8. Follow this path till you return to The Grove.
9. Turn left through The Grove till you reach the entrance where you started at the Car Park.



Map sourced from www.openstreetmap.org

This walk covers some of the area that The Felixstowe Country Park Group is working with East Suffolk Council to enhance and expand for people to enjoy and wildlife to thrive.

Please give us your feedback on this walk to help our project. For more information contact Judith Hedges, The Felixstowe Country Park Group, judithhedges@btopenworld.com



Did you know?

Tetrapaks can be taken for recycling at the Felixstowe Recycling Centre, Carr Road, Felixstowe? Tetrapaks are a popular method of packaging used widely by manufacturer's for products such as fruit juice, long life milk, soups and sauces. However, because they are made up of several layers of different materials they are a little bit more difficult to recycle.



The Recycling Centre also has a big orange Container marked Re-Use. This is for any good quality items that can be re-used. Please book an appointment to drop off items for Re-Use. Items are collected from the site by nominated charities, including The Benjamin Foundation who operate the Re-use Shop at Foxhall Recycling Centre.

All Recycling Centres remain open, and a new online booking system is now in place at all of Suffolk's Recycling Centres. This appointment-only system is necessary to help reduce traffic disruption and queuing on roads around the sites and help manage additional demand on the waste sites. There are also new temporary restrictions and guidelines in place at all sites to ensure the safety of staff and public. For more information telephone 0345 606 6067 or go to:



What to bring for recycling and re-use

crackers	batteries	bicycles	car batteries	cardboard	curtains
mixed light bulbs	discs	wooden angle	flat glass	furniture	garden waste
gas bottles	mixed glass jars	hard plastics	hardware & vehicle	large appliances	cooking oil
scrap metal	mobile phones	paper	household items	printer cartridges	
small appliances	soil	spectacles	textiles	tins & tins	wood & timber

To speed up your visit- please pre-sort your waste

Suffolk County Council | Recycle for Suffolk | FCC



Winter in Felixstowe

Festive fun, Christmas shopping, New Year walks and more...

Wrap up warm and enjoy Winter by the sea.

Winter Warmers

Take a **seasonal walk in and around Felixstowe** - across rare coastal habitats, beside the crashing surf or under the branches of frosty trees. Then relax and warm yourself up with a delicious meal of local produce.

Go in search of **'Big Ships and Surf'** at the Landguard Nature Reserve with a hearty all-day breakfast at the View Point. Take **'An Edwardian Escape'** featuring fine seaside architecture, the Seafront Gardens and a meal overlooking the sea.

Combine the Winter sales and a walk in the town centre with lunch beside a warming fire with **'Bargains and Bites'**. From 'U' to 'T', follow in the footsteps of history along the **Martello Coast Path**, with freshly cooked fish and chips in idyllic Felixstowe Ferry.



Winter days out and more ...

Check out the official tourism website for the town at www.visitfelixstowe.org.uk - for information on things to see and do, plus places to eat, drink and shop too.

Make sure you follow us on social media for the latest news, special offers and inspirational pictures from around the town.

Facebook: www.facebook.com/visitfelixstowe

Twitter: www.twitter.com/visitfelixstowe



Our 'Christmas Unwrapped' campaign is running throughout November and December on our social media pages. Working alongside our wonderful **Town Centre independents**, we are unwrapping a host of fabulous present ideas for everyone. Alongside safe in-store shopping in December, many of our indies are offering online and virtual sales, click and collect and home delivery too. Remember to 'Shop Independent' and support your local High Street this Christmas.

You can check out our list of over 50 Visit Felixstowe indies at www.visitfelixstowe.org.uk/shopping

For gifts for the home - head to Tea and Kate, Suffolk Living and P and K Home Interiors. Beautiful soft furnishings, fragranced candles, unique home accessories, art, and furniture.

Get stylish with the latest fashions from COES Felixstowe, Livia's Boutique and Toggs Clothing. For all things bright and sparkling, check out Hills Jewellers.

Pierrot Stationers and The Card Centre have a great selection of 2021 diaries and calendars. Whilst Stillwater Books has hand-picked books for readers of all ages.

For foodie lovers - the festive hampers and baskets of treats at Felixstowe Fine Foods and Deli; or gift-wrapped speciality wines, beers and spirits from the Wine Boutique.

The Big Christmas Feast - order your turkeys and meats from Deben Butchers, with all the vegetable and salad accompaniments at Fruits & Flowers. There are fresh seafood delights for the table at The Felixstowe Fishmonger and delicious home-made breads and pastries from The Bakery.



Major Events 2021

Mark your diaries for our Major Events in 2021

From historic vehicles and talented artists on the prom, to our fun-packed Carnival, books galore and fireworks. Please keep up to date with these events at www.visitfelixstowe.org.uk

50th Ipswich to Felixstowe Classic Vehicle Rally	Sunday 2 May
Rotary Club of Felixstowe Charity Fun Run	Monday 3 May
The Women's Tour (cycle race)	Saturday 12 June
Felixstowe Book Festival	Friday 25 to Sunday 27 June
Trimley Carnival	Saturday 10 July
Felixstowe Carnival	Friday 23 to Sunday 25 July
Art on the Prom	Sunday 5 September
Richard Bennett Felixstowe Coastal 10	Sunday 12 September
Festival of Fabric	Saturday 2 October
Felixstowe Firework Spectacular	Sunday 7 November



2 May 2021



5 September 2021



23 - 25 July 2021



7 November 2021

Felixstowe Photo Competition 2021

Took a great Autumn picture in Felixstowe? Then don't forget to enter the Felixstowe Photo Competition. You could WIN a prize of £100 to put towards photography equipment. The competition is jointly organised and supported by Visit Felixstowe, Felixstowe Town Council and the Landguard Partnership. Open to all ages and abilities, you can choose between three different themes: Architecture, Seashore and Young Photographer (open to those aged 16 years and under).

To enter, submit your photograph by emailing visitfelixstowe@eastssuffolk.gov.uk Please include your full name, age, a telephone number and the theme you would like to enter. Closing date for entry is 12pm on Wednesday 24 March 2021. Full details at www.visitfelixstowe.org.uk/felixstowe-photo-competition PICTURE RIGHT: Martello Tower 'T' taken by 2020 Competition Winner, Michael Ralph



News from Landguard

Christmas Wishes from the Peninsula

Unfortunately Landguard Fort are unable to hold their usual Christmas event for all the family this year, but Father Christmas has said he is planning to be back in 2021 with his magical trail and grotto. The Fort is aiming to open again for February half-term www.landguard.com.

Felixstowe Museum is also making plans to reopen next year with their wonderful local history displays and artefacts. www.felixstowemuseum.org
Please visit their websites or www.discoverlandguard.org.uk for the latest information.

In the meantime everyone at the Landguard Peninsula would like to wish you a happy and healthy Christmas.



From the Ranger...

The latest blog posts from Leonie - the Ranger at the Landguard Nature Reserve are now online at <http://www.discoverlandguard.org.uk/attractions/landguard-nature-reserve/rangers-blog/>. There is a gentle reminder on the reasons why dogs should be kept on leads on the entire southern section of the reserve, including the shoreline and beach. A special map online provides details of the key dog walking zones. Please respect this and any signage in place on the reserve to protect ground nesting birds and other special wildlife. Thank you.

Other new blog posts talk about Leonie's attendance on a Marine Medic training course looking at how to assess the health of seals, dolphins and whales found on land, returning them to the water and safely rescue them if needed. Plus, there is a call out for more volunteers to help maintain and promote the Nature Reserve especially over the next few months. Please email landguardranger@eastsuffolk.gov.uk to register your interest or to ask any further questions.



Landguard Nature Reserve

Site of Special Scientific Interest

Please help us limit the disturbance to all wildlife by following our dog walking zones.

Dog Walking Zones

Dogs permitted off leads all year

Dogs requested on leads all year





Felixstowe Forward

In Partnership with your local authorities



Smart Towns

Following a successful pilot in Framlingham in 2019, East Suffolk's 'Smart Towns' Project is now being rolled out to other towns across the district including Felixstowe.



The project will provide free public WiFi for visitors in the main shopping areas of each town, as well as providing anonymised visitor monitoring technology to help businesses understand how and when residents and visitors use these areas. This data will improve services and offerings to attract more visitors, as well as gauging the success of events and specific promotions. The project will also deliver a broad business and town support and digital growth programme to enable improved business and town online presence and digital skills across the district.

Felixstowe SMART towns project is expected to start in 2021.

Felixstowe Forward is currently mapping the digital footprint of businesses across the town looking at which businesses have an online presence (whether on Google My Business, their own website, facebook or other social media platform) ahead of the roll out of SMART Towns. This has contributed to the 'Shop Local This Christmas' campaign as featured on the Visit Felixstowe and Felixstowe Chamber of Trade and Commerce websites.

Digital Advice Service

As part of increasing businesses digital footprint small businesses in East Suffolk are being offered advice and support on digital adaptations and interventions to help during the challenges of Covid-19.

East Suffolk Council have launched a free-to-use Digital Advice Service which will offer small businesses, especially those in the retail, leisure and hospitality sectors, with an opportunity to get digital advice and diagnostics.

The service will offer extensive digital business support, a personalised session with a business growth coach, access to digital growth workshops and group coaching sessions, as well as signposting to other forms of support including a small grant scheme. East Suffolk businesses are urged to sign up for the service by emailing smarttowns@eastsuffolk.gov.uk

Work on iconic new seafront café continues

Work on a new iconic café in the heart of Felixstowe's South Seafront is continuing thanks to exemptions to the new Covid-19 restrictions which allow construction work to continue.



Work started on the new landmark building in August and is estimated to be completed in summer 2021, offering indoor and outdoor dining with unspoilt views of the seafront. The ambitious project is being delivered by East Suffolk Council, Barnes Construction, the Dedham Boathouse Group, Plaice Design and Superstructures.

Work has been continuing this week with the steel frame for the new café erected using a mobile crane. Once this work is completed and the scaffolding erected, construction will progress to the next stage which is to start installing the roof.

The development is part of a bigger project of ongoing investments in the South Seafront area, where the Martello Park has already delivered new homes, a play area and new car parking facilities. The Council has also invested in the refurbishing the two public shelters on the South Seafront and the long-term maintenance of its historic Martello, which forms the centrepiece of the park.

The £1.5 million project is funded by East Suffolk Council and the Coastal Communities Fund (CCF) which was launched in 2012 to promote sustainable economic growth and jobs in coastal areas. CCF awarded the Council £950,000 grant funding which enabled the project to go ahead. Additional funding of £30,000 was also awarded from the Coastal Revival Fund.

Photo credit Warren Page



DIGITAL ADVICE SERVICE

DO YOU NEED HELP TO GROW YOUR BUSINESS ONLINE?



Status Report

An extensive personalised digital business report, so can see what's working and where you can improve.



Growth Coaches

A personalised session with a business growth coach followed by access to group digital coaching sessions



Digital Strategy

Our team of professional digital experts will help you to develop a growth strategy for your business.

We are working with the experts at the [Business Growth Coaches Network](#) to get you the digital advice and support that your business needs. Getting started is simple.



To get started simply email smarttowns@eastsuffolk.gov.uk

Plans for Former Deben High School Site

East Suffolk Council recently exchanged contracts to take ownership of the former Deben High School site in Felixstowe from Suffolk County Council. We are excited by this significant opportunity as it will enable us to deliver two important leisure developments as well as much needed housing for the town. We would now like to tell you more about the next steps for our proposals on the four-hectare site, which consists of a range of buildings of various ages and substantial playing fields.

These will include:



- The new Felixstowe Sports Hubs
- A home for Felixstowe Indoor Bowls Club
- Private and affordable housing (50-70 homes)

The project is being undertaken in phases, with Phases One and Two

covering the purchase and partial demolition of the site, while Phases Three and Four will focus on the housing and leisure development. The intention is that building work would then get underway in 2021. To enable this development, a large portion of the former school buildings will be demolished so that the site can be repurposed to accommodate the new development. However, the original Lower School Assembly Hall will be retained and preserved as part of the development proposals. This building will provide a focal point for the development, marking and celebrating the site's former heritage. The housing proposal includes accommodation demonstrating a strong sustainable focus and a low carbon approach. To meet local need, over 30% of properties will be affordable homes.

Access to green space and integration of landscaped areas throughout the development are important aspects of the proposal and, importantly, the playing fields are to be retained in their entirety. The playing fields are protected from development under the Schools Framework Act 1977 and the Council are working with Felixstowe and Corinthians Cricket Club to explore the opportunity to make this their long-term home. By utilising and upgrading the old sports hall facility at the Deben school site, the plan is for the Indoor Bowls Club and Cricket Club to share some of the facilities in a purpose-built centre.

The existing Sports Hall will be developed to increase current leisure opportunities and for use as a Felixstowe Sports Hub. Meanwhile, the Guides, who currently occupy the site, will retain their lease for a hut on the playing field, operating independently.

East Suffolk Council is naturally very excited about this opportunity, however we also want to ensure that local people understand what we are doing, why and when. If you should have any specific queries on the proposed development, please direct these to either leisure@eastssuffolk.gov.uk or housing.development.team@eastssuffolk.gov.uk

Donation celebrates former heritage of school site

The heritage of a former school site in Felixstowe will be remembered in the town's archive after East Suffolk Council donates key items. East Suffolk Council has been working closely with the Felixstowe Society to identify key items to donate from the former Deben High School site to the town's archives, to ensure that key pieces which hold many special memories for the local community are saved for the Felixstowe Secondary School's Archive before the demolition.

The items identified are mainly from the original Grammar School Building and include the wooden front doors, which will match the special commemorative key held by the Society, corridor signage and masonry. The Council is also working with the Society to create a final photographic library before the work start.

For more information about the scheme, including drone footage of the site, go to eastssuffolk.gov.uk/plans-for-former-deben-high-school-site-felixstowe

Felixstowe Seafront Spill Out Survey

Thank you to everyone who has taken time to complete the Seafront Spill Out survey. The results can now be viewed at

surveymonkey.com/results/SM-BW3B5KP67



Shop Local and Stay Safe Campaign

East Suffolk Council has created a Shop Local and Stay Safe marketing campaign to support our town centre businesses and help to create a safe environment and experience for customers.

The campaign will seek to support all our shops and retailers in keeping their businesses open and reassure local residents and visitors that there are safety measures in place when using our towns.



Materials are available to help shops and retail businesses show their customers how they have adapted. A support package of guidance and advice is also available, which highlights examples of good practise.

How can your business get involved?

Find out more at eastssuffolkmeansbusiness.co.uk/business-support/resources/town-centre-support where you will find a number of posters and templates for social media that you can download. You can also order printed posters to display in your shop, business, or town. There is also a detailed Business Information Pack.

Also don't forget...

Use the #ShopLocal #StaySafe in your social media posts

Buy locally from other businesses when purchasing goods and services for your own business

Let your customers know you are open – ensure your website and/or social media is up to date

Visit Felixstowe locally will also continue to support local businesses through regular social media posts including Christmas Unwrapped and Town Talk campaigns.

If you would like to know more or have any questions, please do not hesitate to contact us:

Felixstowe Forward 01394 444566

Felixstowe.forward@eastssuffolk.gov.uk



Like many towns of similar size and make up, Felixstowe faces some traditional challenges. Competing against other places who are trying to attract more customers and visitors, increasing spend and dwell time, presenting an enjoyable environment and attracting investment. These challenges have been exacerbated by COVID-19 pandemic.

Strength comes from working together and partnership and a BID offers this opportunity in an organised and sustainable way. The BID will re-invest in the priorities that matter locally.

What are BIDs?

BIDs are an arrangement whereby businesses come together and decide which improvement they feel could be made in their town, how these will be implemented and what it will cost. BIDs are financed and controlled by the businesses within a selected area. BIDs deliver additional projects and services over and above those already provided by public bodies.

Felixstowe Forward was tasked by local businesses to explore the feasibility of a BID and has continued to work closely to develop the full business plan and to bring the BID to ballot.

Government information on BIDs can be visited here:

<https://www.gov.uk/guidance/business-improvement-districts>

Felixstowe businesses say 'Yes' to a Business Improvement District (BID)

Businesses and organisations in Felixstowe have made their voices heard and have voted in favour of taking more control over their future by setting up a Business Improvement District (BID).

Ballot results released by the independent scrutineer, Civica Election Services, on November 11th revealed that 57% of all those who voted are in favour of the BID progressing. For the BID to be successful, a second trigger 'majority by rateable value' was also required and this was achieved with 61% of those who voted.

It is anticipated that the BID will commence from April 2021 for a five year term and will be financed through a BID levy, the proceeds of which will be invested into the town centre and seafront on the additional projects that businesses have identified and set out in the Business Plan. Over the five years, the BID will generate over £600,000 to be spent in the BID area.

What happens next?

Between now and April 2021 work will commence on:

- Setting up Felixstowe BID as a company limited by guarantee
- Putting in place the Governance and Management arrangements
- Initial project scoping to deliver the identified priorities

If any business levy payer would like to be kept informed and get more involved, the BID is actively seeking representation from the following sectors:

- Retail – both National and Independent (and representing small, medium, and large retailers)
- Office /Commercial
- Food / Drink or Leisure

What are the identified priorities?

1. Local and Visitor Marketing and Promotion
2. Car Parking / Public Transport and Signage
3. Business Support

You can find read the full business plan at felixstowebid.co.uk/downloads

For further information, please visit the website

www.felixstowebid.co.uk or contact the Project Director, Helen Greengrass at helen@felixstowebid.co.uk

The BID Task Group, a consortium of local businesses which have been leading the development of the Felixstowe BID commented 'This is a fantastic result for Felixstowe and we would like to say thank you to those involved in bringing it about. Businesses have taken the bold decision to invest, particularly in these challenging an uncertain time. The real work begins now, and we are determined to make sure that we are the forefront of the recovery and growth'.

Useful Links for Businesses

Employers Guide to operating safely

eastsuffolkmeansbusiness.co.uk/business-support/resources/covid-19

Health and Safety Advice

eastsuffolk.gov.uk/business/covid-19-health-and-safety-guidance-for-businesses

Business advice

eastsuffolkmeansbusiness.co.uk/business-support/resources/covid-19

Covid-19: Business Grant Funding

For the latest information on the Covid-19 business grant funding that may be available for your business please visit the link below

eastsuffolk.gov.uk/covid-19-business-grant-funding

High Street Task Force

The High Streets Task Force, commissioned by the Ministry of Housing, Communities and Local Government (MHCLG) is an alliance of place making experts working to redefine the high street. We provide guidance, tools and skills to help communities, partnerships and local government transform their high streets.

The High Streets Task Force recently launched a call for case studies to understand the work going on across the country to manage, adapt and transform high streets. The Task Force will share these examples throughout its work and provide a platform online for others to explore this best practice. To read the Felixstowe Case Study visit highstreetstaskforce.org.uk and search Felixstowe



Felixstowe Lawn Tennis Club

Outdoor tennis was one of the first recreations to be re-allowed during Lockdown 1, and up until November 4th the club was a hub of activity, providing plenty of much needed physical exercise, fresh air, fun and a place to generally let off steam for both adults and kids alike.



FLTC was established in 1884 and is one of England's few clubs to still have grass courts. In total we have 18 courts, 9 of which are floodlit and can be used all year round. The club is growing and last year new floodlights were installed on 3 courts. We plan to do 3 more in 2021. This year we introduced automatic irrigation to 3 grass courts, meaning they will remain in better condition for a longer summer season, again, the plan is to install more in future years.

During Lockdown 1, the club introduced a court booking system, so that all courts have to be pre-booked. We like the system so much that we have no plans to remove it. Members can choose and book courts easily via the website, and at least 1 court is always available to non-members, which can be booked and paid for online.

We are also lucky to have secured the services of two of Suffolk's best coaches. Jez Cowley is a level 4 performance coach and Matt Hough is qualified to level 3 and was Suffolk LTA's coach of the year 2018. In "normal times" they run a full coaching programme ranging from individual lessons at any level, to kid's Saturday morning sessions, cardio tennis for fun fitness and group coaching at various levels.

If you've ever thought of taking up a new sport, (I didn't take up tennis until my mid-forties) or you are considering dusting off that old racket, or you'd like your kids to get into something fun and healthy, then I heartily recommend FLTC for a warm welcome (if that's currently allowed), as a place to make new friends, get a bit fitter and have some good competitive and safe fun.

Adult Membership is only £20 a month, but if you join during 2020, your first year will be discounted by 50%.

For more information go to www.felixstowetennis.co.uk, or contact Jez and Matt directly via coaching@felixstowetennis.co.uk.

Julie Yeo, Committee Member

ECG machine Presented to Felixstowe Clinic

An ECG machine was supplied by the Rotary Club of Felixstowe for use in the recently established Falls and Frailty Clinic Felixstowe. The machine is the latest model on the market, having been recommended by Dr Feltwell the senior partner of the Grove Medical Centre. It will be connected to the Ipswich Hospital and the local Felixstowe surgeries enabling early diagnosis and unnecessary journeys to Ipswich. This will be a great asset for the local community. The machine was supplied by Felixstowe Rotary Club of Felixstowe at the request of the Felixstowe Hospital league of friends. A plaque, which is shown being presented to Rotarian Dougie Pipe, will be placed in the entrance to the Clinic.



Felixstowe Men's Shed

With the help of Zoom and Emails contact continued on a weekly basis throughout lockdown, and when we were allowed to meet we did with social distancing in place and restricting access to the workshop to 4 or 6 at a time. Landguard Fort provided some projects that include wooden rifles for their gun rack, best of all is the construction of 1940's design loud speaker boxes for the plotting rooms. Walk into the air plotting room at the Fort and you trigger a sound system with a Spitfire flying through the room. The speakers have a design, fabric and staining in keeping with Battle of Britain times.



Felixstowe Master Mariners Club

Lat 51°59'N Long 01°23'E



The Felixstowe Master Mariners Club was formed in 1975 as a social gathering for serving or retired Royal and Merchant Naval officers, with the ultimate aim of raising funds for maritime causes. With the decline of the British Merchant Fleet and the rapid growth in The Ports of Felixstowe, Ipswich and Harwich it was decided to invite those associated with the Shipping Industry in general and those in The Yachting Fraternity as Associate Members. The Membership today stands at 100.

Before all of us were affected by this global virus, The Master Mariners Club met on the third Tuesday of each month, at what everyone regards as a very appropriate venue, The Felixstowe Ferry Sailing Club. Following lunch Members were entertained by an interesting presentation by either by one of The Members or a Guest Speaker.

Subjects of the talks can vary from Pirate Radio Ships, Walking The Camino de Santiago, sailing The South West Pacific Islands for work and the beginnings of The Suffolk Accent and Dialect.

The core value of The Club remains as it always has, to raise funds for charitable donations each year and every effort is being made to fulfil this at the end of a difficult 2020.

At a recent Virtual Annual General Meeting, Club Member Captain Peter King was formally elected and duly took over from Captain Ian Buckle as Club Captain. As a Member of The Hon. Company of Master Mariners, a Fellow of The Nautical Institute and a Member of The Council for Nautical Research, Peter brings with him over 62 years continuous service and experience in the merchant shipping industry. Peter also recently took on the role of Hon. President of The Felixstowe Sea Cadets so he will have his hands full with this latest appointment.

Our lunch time meetings will return, but obviously we do not know when.

We invite anyone interested to visit www.mastermariners.uk. You would be more than welcome to apply to join our friendly, welcoming club.

leveltwo
youth project

Working with young people & families in Felixstowe.

Do you need someone to talk to?

Please Contact Us From 9am - 6pm, Mon - Fri
Mental Health Issues: 07392 964461
Family Support: 07444 891353
General Enquiries: 07724 356723

Christmas in a box with Felixstowe Salvation Army

Hello Friends,

In July my wife Katerina and I were privileged to be appointed as the new Salvation Army Officers to Felixstowe. It has been a strange time to move with all the implications of the Coronavirus and the restrictions placed upon us all has meant getting to know people is taking longer than usual.

I have to say we have both been warmly welcomed and we feel at home and privileged to work with a committed group of people whose desire is to show their love for God by lovingly engaging and serving the people of Felixstowe and further afield. If it's staffing our front office, handing out or delivering food parcels to engaging online with children's activities or making phone calls. It all makes a difference to life in these uncertain days.

On behalf of the Salvation Army, we want to take this opportunity to express our appreciation for all the donations and support we've received during 2020. Without your help and support our work would be greatly impacted.

Due to the Coronavirus we'll not be able to provide a sit down Christmas Meal as we would usually do but we are appealing for new toys so we can pass them on to families that have been referred or coming seeking help. We intend too to deliver up to 120 meals in a box on Christmas day details below.

We are open Monday to Friday 10-1 for help and support. We will never see a family or individual go without! If people prefer to email then please send this to David.Lennox@salvationarmy.org.uk or call/txt 07726278637

We hope you have a Merry Christmas and a happy New Year
Best Wishes

David & Katerina Lennox (Major)
Felixstowe Salvation Army



Gifts of Joy

Share some Joy this Christmas by donating a **NEW unwrapped Toy or Gift**

NEW Toys & Gifts can be left at Felixstowe Salvation Army in Cobbold Road, IP11 7EL or CO-OP Great Eastern Square

All toys and gifts are distributed to **Isolated and Vulnerable** people in our community

For more information, to refer a family, a vulnerable person or simply share some joy this Christmas then please call **07726 278637**

The Salvation Army is a Christian church and registered charity in England (214779)




CHRISTMAS IN A BOX
WITH FELIXSTOWE SALVATION ARMY

THIS CHRISTMAS, DUE TO THE CURRENT SITUATION, WE WILL NOT BE ABLE TO OFFER A CHRISTMAS DAY SERVICE OR DINNER IN OUR CHURCH BUILDING. HOWEVER, WE ARE ABLE TO BRING IT TO YOU. IF YOU KNOW SOMEONE WHO MAY BE ALONE OR VULNERABLE THIS CHRISTMAS PLEASE GET IN TOUCH.

CALL: JACKIE ON 07726 278637
EMAIL: FXSACHRISTMAS2020@OUTLOOK.COM
FELIXSTOWE SALVATION ARMY, COBBOLD ROAD, IP11 7EL

THE SALVATION ARMY IS A CHURCH AND REGISTERED CHARITY IN ENGLAND (214779)

Caring is at the heart of everything we do...

Visitor pods now available

Together we *respect*, with *compassion* we care, through *commitment* we achieve



Mill Lane offers specialised nursing care for the elderly and has an enviable reputation in the local community for its high quality care, offering a choice of welcoming reception rooms with attractive patio areas, all available for our residents and their guests to enjoy.

Offers specialised nursing care for the elderly.

Mill Lane,
79 Garrison Lane, Felixstowe,
Suffolk, IP11 7RW.

Tel: 01394 279509



Foxgrove is widely regarded as one of Felixstowe's finest care homes. The warm friendly atmosphere and the elegant lounge and dining room at this care home in Felixstowe combine to create a charming environment for our residents.

Provides a high standard of residential care.

Foxgrove,
High Road East, Felixstowe,
Suffolk, IP11 9PU.

Tel: 01394 274037



Based in Old Felixstowe, Maynell House provides a high standard of residential care. The house is a late Victorian listed building, formerly Felixstowe College, lovingly extended and refurbished to retain its original features, creating a superb home.

Provides a high standard of residential care.

Maynell House,
High Road East, Felixstowe,
Suffolk, IP11 9PU.

Tel: 01394 272731



Please do pop in or call anytime for further information, to arrange a tour or to meet the team.



healthcarehomes

healthcarehomes.co.uk



The Federation of Fairfield and Colneis



We are in the middle of a very busy (and different) term at both Fairfield and Colneis. I have been hugely impressed with the way in which children, staff and parents have come to terms with some of our new ways of working. They are all showing real resilience and it is great to have children back into school - where they should be!

Although it is different, we have still managed to continue some of our community events. Our Harvest celebrations were a good example of this. Rev Diane Smith from Trinity Methodist Church led a harvest assembly for us through Zoom, and although we missed attending the church in person as we would normally do, we very much appreciated her support. Our school community were able to donate food to the Basic Life Charity to aid the valuable work that they do in Felixstowe.

As always, schools should continue to take a central place in the local communities they serve. We work very hard to instil a core set of values within the children and to help them understand what it means to be a good and positive citizen. Our hope is that they will be able to take an active interest in their communities as they get older.

Mr Mark Girling, Headteacher, The Federation of Fairfield and Colneis



Felixstowe International College in Socially Distant Community Work



Our students successfully adapted their approach to community work this term to suit Covid restrictions. They worked remotely with local charity, Home for Good: Suffolk, supporting families caring for vulnerable children in fostering, adoption and special guardianship.

Key Stage 3 day students, Amelia and Grace, launched a project creating a navigation trail through a local park, using written clues and site references from the popular location app, what3words. Home for Good forwarded it to families they support, to provide an activity to complete as individual bubbles. Families then shared the experience with each other in their closed social network group. This was very important to maintain relationships and prevent the families feeling isolated.



Amelia reported, 'I enjoyed the project because we knew it would be giving others a fun activity outside.' Grace agreed: 'It was nice to know that you were helping people in different circumstances to you.' In this time of restrictions, we are encouraged that our students can

still find successes in important community work. We look forward to further projects to suit changing guidance on social distance. Felixstowe International College is a small independent Christian secondary school based in Maybush Lane, Old Felixstowe. Placing first in Suffolk for A Level performance in 2018, it offers top quality bespoke education to international boarding students and more recently to local day students, to whom scholarships are available. It also offers support to home-schooled students wishing to get back to the education system, on a full time or part-time basis.

Katherine Murphy, Acting Co-Principal, Felixstowe International College

It's not all in the name, but it is a starting point



In 2019 Felixstowe Academy became part of the Unity Schools Partnership. This close-knit family of schools based primarily in Suffolk works cohesively together to ensure all students receive an excellent education. For us this represented change and new beginnings, so we wanted our new name, Felixstowe School, to reflect that.

We do not believe that the experience from school to school should differ. Of course all schools should have the autonomy to respond to the local context, but the fundamental offer should be the same - excellent education, intervention to help level the playing field, and opportunity. Without these things we are failing the young people in our care and we are losing the trust of our community who we so desperately rely on for support.

Our school has seen lots of positive change over this last year, despite the very challenging times. In addition to changing our name we have introduced a house system and vertical tutoring. These initiatives are not knee-jerk reactions designed to quickly fix perceived issues, they are part of a strategic approach to ensure that any change that occurs has a lasting positive impact. We want to build a cohesive and highly energised school where students leave us more well-rounded, with strong literacy skills, good grades, and transferable skills.

I remember what it was like to look at the world in wonder and excitement imagining all the possibilities. We want all our students to do the same without applying any limits on themselves. We embrace the idea that at the core of success is opportunity.



Mr Meitner-Harvey
Assistant Headteacher
Felixstowe School



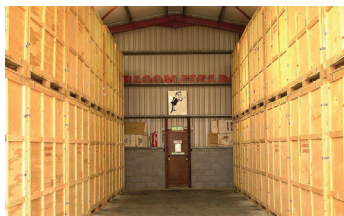
www.bloomfieldsfurniture.co.uk

BLOOMFIELDS
Furniture - Beds - Carpets - Storage



Since in 1916, Bloomfields continue to offer great customer service. Whether you're looking to replace your three-piece suite, invest in a new mattress or re-carpet your home, our friendly and knowledgeable team is always on hand to assist you.

Moving house, downsizing, or just need somewhere to store your stuff? We have a secure warehouse with space for 80 large (8ft x 7ft x 5ft) storage crates, available from as little as £13 per crate per week including VAT and insurance.



Give us a call, drop us a line, or just pop in!

Bloomfields

255-257 High Street
Felixstowe IP11 9DU
01394 282482
Bloomfields1916@gmail.com



Keeping Connected through COVID

The fear and uncertainty COVID-19 has introduced to the world can be eased a little by maintaining active relationships with the people you care about, but doing so while keeping to ones' established bubbles can be difficult. Using technology for the first time may mean venturing outside one's comfort zone but the benefits for helping to stay in touch are invaluable. Below are a few ideas of how technology can keep people feeling sociable, even during the most intense phases of lockdown.



Video Calling

"Video Calling" goes one step beyond an ordinary phone call, in that you can see who you're chatting to in real-time. There are more free programs available for your computer, laptop, tablet and smartphone that support "video calling" than ever before, including Skype, WhatsApp, Zoom, Discord, SnapChat, and Google Hangout. These programs are easy to install using the App Store or Play Store icon on your mobile phone or tablet, while some can be accessed via their dedicated website.

Instant Messaging

"Instant Messaging" has been around almost as long as the internet, and its inherent simplicity cannot be overstated. Many of the above stated programs offer options to simply chat with text or send photographs; "Pidgin" is a particularly effective universal chat client that allows you to consolidate all of these different messaging apps into one streamlined, lightweight tool.

Social Media

Social Media can be a bit of a mixed blessing at the best of times; but it can be intimidating for all but the most hardboiled of internet users. There is no better way to feel "in the loop" than by logging in to your preferred social media outlet and trading thoughts and opinions with your family and friends. Sites such as Facebook, twitter and Instagram can all help to keep in touch with loved ones.

If you own a mobile phone, tablet or computer now is the time to start teaching yourself, most answers can be found by using your search engine, just type your question into the search bar and you may even find a video to watch which shows you how.

Launch of 'Rebuilding Local Lives Surviving Winter Appeal'



For almost a decade, Suffolk Community Foundation's annual Surviving Winter Appeal has saved lives in Suffolk. Raising vital funds and supporting many thousands of vulnerable and older people to stay warm and well in their own homes.

However, with the Coronavirus on the rise and so many people already in need of help, the launch of this year's appeal is being brought forward by a month and combined with the central Re-Building Local Lives emergency appeal for the County.

The priority is to ensure that vulnerable people in Suffolk 'Stay Warm, Stay Well and Stay Connected' as the nights draw in and temperatures drop.

Through recent challenging times, the Foundation has already worked with Suffolk to raise £1.7 million and delivered over 350 grants to local organisations worth nearly £1.5 million but, as winter approaches, a further £300,000 is urgently needed to support local need.

Last year the annual Surviving Winter Appeal raised enough money to heat over 1000 homes and connected hundreds of vulnerable people to other services to help tackle isolation, other physical and mental health issues and improve poor living conditions, debt and a general lack of access to services that could improve their lives.

Keep Moving Suffolk

Cllr Graham Newman, the new Chairman of Suffolk County Council, has used his position as civic head for the organisation to issue a rallying cry for people to remain active during lockdown.



In his first public statement since being elected, Graham – who is also a Felixstowe Town Councillor for Port Ward - said: "I know people are, understandably, concerned and anxious at the prospect of another lockdown and with the onset of colder weather and darker nights the idea of being active can be daunting. However, I would encourage everyone, if they can, to be as active as possible over the autumn and winter months. Being active is good for both your physical and mental health and can be a great antidote to the way we're all feeling at the moment."

Cllr Newman was particularly keen to highlight the resources available through the Keep Moving Suffolk campaign as an important source of information and advice. He said:

"The Keep Moving Suffolk campaign website (www.keepmovingsuffolk.com) was a valued and trusted support for many people during the first lockdown and will continue to be so for the weeks and months ahead. It has links to many great free tools to help people work out at home or outside in a safe way. If anybody is looking for ideas, or inspiration, then it's a great place to start.

As a keen cyclist I would also recommend the Love to Ride campaign. Cycling is a great way to exercise in a safe, socially distanced way. Traffic levels are likely to be much lower than usual this month, so if you haven't ridden in winter before, now is a great opportunity to give it a go."

The Keep Moving Suffolk campaign can be found at www.keepmovingsuffolk.com and includes details and links to the Love to Ride initiative.

KW AUTOS

- MoT preparation
- Air Conditioning
- All makes of vehicle
- Collection & Delivery
- Servicing and Repairs
- Exhausts ● Tyres
- Diagnostics

the Good Garage Scheme

CALL US NOW ON
01394 284886

Units 1-6, 79 Undercliff Rd. West,
Felixstowe IP11 2AD

E: service@kw-autos.co.uk

W: www.kw-autos.co.uk

Love... Felixstowe Volunteers



Throughout October, Felixstowe Town Council celebrated a selection of our volunteer-based organisations and groups – with a special display at the Visit Felixstowe noticeboards in the Town Centre (Triangle and Great Eastern Square). To learn more about the organisations and groups featured – and how you can get involved, please visit their websites as listed below.

Environment

Felixstowe Beach Litter Pick

www.facebook.com/Felixstowe-Beach-Litter-Pick-2013428225599256

Friends of Felixstowe Seafront Gardens www.visitfelixstowe.org.uk/things-to-do/the-seafront-gardens/friends-of-the-gardens

Litter-free Felixstowe www.facebook.com/groups/346355296120853/
Suffolk Litter Picking www.suffolkrecycling.org.uk/learning-zone/get-involved/Suffolk-litter-picking

The Grove/Abbey Grove

<https://www.woodlandtrust.org.uk/visiting-woods/woods/abbey-grove>

<http://www.visitfelixstowe.org.uk/things-to-do/attractions/the-grove-and-abbey-grove/> Email: rhstoner@msn.com

Tourism

Landguard Peninsula

www.discoverlandguard.org.uk/volunteering-at-landguard

Visit Felixstowe Ambassadors – Tourist Information Centre Beach Hut

www.visitfelixstowe.org.uk/about-us

Churches

Churches Together Felixstowe <https://churchestogetherfelixstowe.org>

Community

The BASIC Life Charity www.basic.org.uk

Memory Lane <http://fxtdaa.onesuffolk.net/>

FACTS (Felixstowe Area Community Transport Service)

www.factsbus.org.uk

Felixstowe Helping Hands <https://www.facebook.com/groups/640348386531100/>

Felixstowe Radio www.felixstoweradio.org.uk

The Hope Trust www.hopetrust.org.uk

Walton Parish Nursing www.waltonpn.org.uk

Eyes on the Coast

Coastwatch Felixstowe www.coastwatch-felixstowe.co.uk

Felixstowe Coast Patrol www.felixstowecoastpatrol.co.uk

Cabinet Member for the Environment, Cllr James Mallinder produced a video, to say “Thank you” to our all volunteers!

Felixstowe Youth Forum

Just before Lockdown the Town Council’s Youth Forum used their budget to purchase some Environmental books for Felixstowe Library and some ‘Stop Idling’ banners to put up at all the local schools. These posters are to remind all drivers to turn their engine off when stationary.



Felixstowe schools are looking forward to the return of the Youth Forum this month in their first ever Virtual Youth Forum meeting.

Remembrance

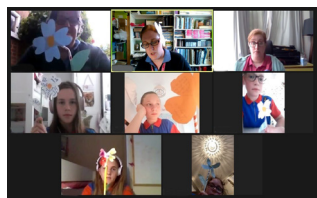
Felixstowe Town Council were pleased that so many could watch the Remembrance service via the Royal British Legion website safely this year. If you are able to take your exercise to the Felixstowe War Memorial you will see the wonderful work that local schools took part in to remember those lives that were lost.



Community Grants

This year Felixstowe Town Council launched a streamlined grant application process to enable community organisations and charities to get a quick decision on funding for projects and equipment connected to the Coronavirus. We recently asked for some feedback on some of the grants given over the past year and this is what our local groups have said:

1st Walton Guides - Thank you to Felixstowe Town Council for their grant to us. The grant meant we could pay for Zoom to continue with virtual Guide meetings whilst we couldn't meet in person, and helped fund badges that the girls were working towards; the Investigator Badge and the Mixology Badge.



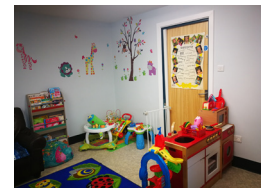
The Disability Advice Service (East Suffolk) based in Martlesham Heath but serving the residents of Felixstowe and beyond received a grant from Felixstowe Town Council to help us cope with an influx of crisis intervention cases caused by the pandemic. We are so grateful for this help urgently needed and generously granted.

Emmaus - The funding we received supported the delivery of a Mental Health pack, dropped off at the door of vulnerable people during the first lockdown. Claire Staddon, Chief Executive of Emmaus Suffolk said, “Your funding also helped us access further funding for this project which enables us to continue to deliver this until December 2020 through the government fund administered by The Big Lottery. Thank you for your support”



FACTS – The grant we received enabled us to keep operating throughout the lockdown. Thank you.

Lighthouse Women’s Aid were very grateful to receive a grant of £1,308. At short notice we needed to purchase remote working equipment so that we could continue to support women and young people across the county who were experiencing domestic abuse and violence. Thank you.



Memory Lane Dementia Support Group Felixstowe were fortunate to receive some grant funding to pay for members to take part in craft activities. Crafting is a great way of engaging with people who have dementia.

Walton Parish Nursing received a grant to provide “Well-being” support post-coronavirus, and cover extra costs such as PPE. During the first ‘lockdown’ period we supported our clients through regular phone calls. This was a vital aspect of our work as many of our clients felt increasingly isolated during this period and faced severe challenges managing their mental health.

6th Old Felixstowe Scout Group - We would like to thank Felixstowe Town Council for the Coronavirus Grant of £600 which has been a great help in these difficult times. The grant has enabled us to purchase equipment including a shelter that will assist us to return to face to face scouting.



If you would like further information on our grants process, please go to our website www.felixstowe.gov.uk/grants or contact Debbie Frost, Deputy Town Clerk on 01394 288192 or email debbie.frost@felixstowe.gov.uk

Town Councillors 2019/2023

Mayor of Felixstowe: Cllr Mark Jepson

Deputy Mayor of Felixstowe: Cllr Sharon Harkin

Coastal Ward

Darren Aitchison
darren.aitchison@felixstowe.gov.uk
07479 556736



Nick Barber
nick.barber@felixstowe.gov.uk
07876 757268



Seamus Bennett
seamus.bennett@felixstowe.gov.uk
07818 664751



Steve Gallant *
steve.gallant@felixstowe.gov.uk
01394 276336



Sharon Harkin
sharon.harkin@felixstowe.gov.uk
01394 671758



Mark Jepson *
mark.jepson@felixstowe.gov.uk
01394 278622



Doreen Savage
doreen.savage@felixstowe.gov.uk
01394 285895



Steve Wiles * **
steve.wiles@felixstowe.gov.uk
07986 566225



Marshes Ward

Mick Richardson
mick.richardson@felixstowe.gov.uk
07946 028517



Port Ward

Stuart Bird * **
Stuart.bird@felixstowe.gov.uk
01394 275128



Tracey Green *
tracey.green@felixstowe.gov.uk
07759 218476



Graham Newman **
graham.newman@felixstowe.gov.uk
07802 397905



Andy Smith
andy.smith@felixstowe.gov.uk
01394 283283



Walton Ward

Mike Deacon *
mike.deacon@felixstowe.gov.uk
01394 211146



Margaret Morris
margaret.morris@felixstowe.gov.uk
01394 274345



Kimberley Williams
kimberley.williams@felixstowe.gov.uk
01394 284180



Key

* Councillor is also a Member of East Suffolk Council

** Councillor is also a Member of Suffolk County Council

Member of Parliament for Suffolk Coastal:

Dr Therese Coffey MP
therese.coffey.mp@parliament.uk
020 7219 7164



Felixstowe Town Council Meetings

Mayor of Felixstowe: Cllr Mark Jepson

Deputy Mayor of Felixstowe: Cllr Sharon Harkin

9 December	Finance & Governance	7.30pm
16 December	Planning & Environment	9.15am
16 December	Civic & Community	7.30pm
13 January	Planning & Environment	9.15am
13 January	Full Council	7.30pm
20 January	Finance & Governance	7.30pm
27 January	Planning & Environment	9.15am
10 February	Planning & Environment	9.15am
17 February	Civic & Community	7.30pm
24 February	Planning & Environment	9.15am
24 February	Assets & Services	7.30pm
10 March	Planning & Environment	9.15am
10 March	Full Council	7.30pm

Note: all meetings listed are currently held virtually via Zoom, and are open to the press and public to attend. The link for each meeting can be found on our website, facebook page and twitter. For further information please telephone 01394 282086.

Contacting Council Staff

Phone: 01394 282086 (all staff)

Email: enquiries@felixstowe.gov.uk

Address:

Felixstowe Town Hall, Undercliff Road West, Felixstowe, IP11 2AG

Website: www.felixstowe.gov.uk

Ash Tadjrishi – Town Clerk and Responsible Financial Officer

townclerk@felixstowe.gov.uk

Debbie Frost – Deputy Town Clerk

debbie.frost@felixstowe.gov.uk

Lorna Monsen – Mayor's Secretary

lorna.monsen@felixstowe.gov.uk

Sue Faversham – Business Services Officer

sue.faversham@felixstowe.gov.uk

Sarah Morrison – Planning Administration Assistant

sarah.morrison@felixstowe.gov.uk

Shaun Congi – Financial Administration Assistant

shaun.congi@felixstowe.gov.uk

Let the Light in... Felixstowe

Sparkling! Felixstowe - we want you to help us 'Let the light in' this Christmas... and in turn help out a local charity!



Take a picture of your decorated window, house or shop in Felixstowe - and share under the top pinned post on one of these Facebook pages: Visit Felixstowe, Lions Club of Felixstowe, Felixstowe Town Council and Spotlight on Felixstowe.

From a simple string of fairy lights in your window to a glittering outside extravaganza - whether large or small - we want to see your fantastic festive displays.

Closing date for posting pictures is midnight on Tuesday 22 December 2020.

On Christmas Eve (Thursday 24 December 2020), the Mayor of Felixstowe will pick three winners: a decorated window display; a decorated house display; and a decorated shop window.

Each winner will receive a cash prize of £50 to present to a local charity of their choice.

Remember pictures can be posted on one of the following Facebook pages: Visit Felixstowe, Lions Club of Felixstowe, Felixstowe Town Council and Spotlight on Felixstowe.

Shop Local and Stay Safe

East Suffolk Council 'Our Shop Local and Stay Safe' campaign aims to reassure the people of East Suffolk that there are robust safety measures in place in our town centres and encourage them to support local businesses.

See <https://eastsuffolkmeansbusiness.co.uk/business-support/resources/town-centre-support> for more information.

At the time of writing Covid restrictions are in place across the UK, with new rules for everything from meeting friends to going to the shops. These restrictions are expected to end at midnight on the 2nd December. For the latest guidance <https://www.gov.uk/coronavirus>.

Local independent businesses have had a challenging year so why not take time this Christmas to **shop local** for all your essential and non-essential items. A comprehensive business directory created in partnership with the Felixstowe Chamber of Trade and Commerce is available at www.visitfelixstowe.org.uk. If you are a business, please check your listing and let us know of any changes or omissions by emailing felixstowe.forward@eastsuffolk.gov.uk. Thank you.



As part of the Shop Local and Stay Safe campaign, posters are being delivered to all independent shops and business in the town, and will be displayed on the Town's Notice Boards.

Litter spreads the virus. Stay safe, stay tidy

#StaySafe
Please maintain social distancing and stay safe whilst supporting our towns.

Eat, shop, play so our businesses can stay

#ShopLocal
Please maintain social distancing and stay safe whilst supporting our towns.

Let's keep each other safe and well, wear a mask and keep your distance

#StaySafe
Please maintain social distancing and stay safe whilst supporting our towns.